

## Release Notes

# Oracle's PeopleSoft PeopleTools 8.54

March 2015

Release Notes for PeopleSoft PeopleTools 8.54

Copyright © 2015, Oracle and/or its affiliates. All rights reserved.

Oracle and Java are registered trademarks of Oracle and/or its affiliates. Other names may be trademarks of their respective owners.

Intel and Intel Xeon are trademarks or registered trademarks of Intel Corporation. All SPARC trademarks are used under license and are trademarks or registered trademarks of SPARC International, Inc. AMD, Opteron, the AMD logo, and the AMD Opteron logo are trademarks or registered trademarks of Advanced Micro Devices. UNIX is a registered trademark of The Open Group.

This software and related documentation are provided under a license agreement containing restrictions on use and disclosure and are protected by intellectual property laws. Except as expressly permitted in your license agreement or allowed by law, you may not use, copy, reproduce, translate, broadcast, modify, license, transmit, distribute, exhibit, perform, publish, or display any part, in any form, or by any means. Reverse engineering, disassembly, or decompilation of this software, unless required by law for interoperability, is prohibited.

The information contained herein is subject to change without notice and is not warranted to be error-free. If you find any errors, please report them to us in writing.

If this is software or related documentation that is delivered to the U.S. Government or anyone licensing it on behalf of the U.S. Government, the following notice is applicable:

**U.S. GOVERNMENT END USERS:** Oracle programs, including any operating system, integrated software, any programs installed on the hardware, and/or documentation, delivered to U.S. Government end users are "commercial computer software" pursuant to the applicable Federal Acquisition Regulation and agency-specific supplemental regulations. As such, use, duplication, disclosure, modification, and adaptation of the programs, including any operating system, integrated software, any programs installed on the hardware, and/or documentation, shall be subject to license terms and license restrictions applicable to the programs. No other rights are granted to the U.S. Government.

This software or hardware is developed for general use in a variety of information management applications. It is not developed or intended for use in any inherently dangerous applications, including applications that may create a risk of personal injury. If you use this software or hardware in dangerous applications, then you shall be responsible to take all appropriate fail-safe, backup, redundancy, and other measures to ensure its safe use. Oracle Corporation and its affiliates disclaim any liability for any damages caused by use of this software or hardware in dangerous applications.

This software or hardware and documentation may provide access to or information on content, products, and services from third parties. Oracle Corporation and its affiliates are not responsible for and expressly disclaim all warranties of any kind with respect to third-party content, products, and services. Oracle Corporation and its affiliates will not be responsible for any loss, costs, or damages incurred due to your access to or use of third-party content, products, or services.

# Contents

Contents .....	3
Introduction .....	9
Purpose of This Document .....	9
Related Resources .....	9
Statement of Direction .....	9
Release Value Proposition .....	9
Prerelease Notes .....	10
Release Notes .....	10
Cumulative Feature Overview Tool .....	10
Video Feature Overviews .....	10
PeopleSoft Information Portal .....	11
Social Media .....	11
Before You Begin .....	12
Platform Support Enhancements .....	13
Summary of Added and Changed Product Support .....	13
64-Bit Development Client .....	14
Development Tools Enhancements .....	15
PeopleSoft Fluid User Interface .....	15
Mobile Application Platform .....	19
Support for Oracle Mobile Application Framework .....	20
PeopleCode .....	20
PeopleCode Developer's Guide .....	21
PeopleCode API Reference .....	22
PeopleCode Language Reference .....	30
PeopleSoft Application Designer .....	33
Developing PeopleSoft Fluid User Interface Applications .....	34
Support for PNG and SVG Formats for Image Fields .....	34
Improved Definition Reference Search Functionality .....	35
Toolbar Buttons Provide Quicker Access to Page and Record PeopleCode .....	35

Long Edit Box Character Limit Counter .....	35
Disabling Row Highlighting for Grids .....	36
SQR-Based Reports for PeopleTools Cross-Reference Reports.....	36
PeopleSoft Search Technology .....	36
PeopleTools Portal Technology .....	38
Activity Guide Enhancements.....	38
Branding Framework.....	38
Related Content and Related Actions Enhancements .....	39
Switching between Classic and Fluid User Interfaces.....	40
Pagelet Wizard Enhancements .....	40
Conditional Navigation Enhancements.....	40
Deprecated Features .....	41
PeopleSoft Documents Technology .....	41
Omitting the JSON Labels in Generated JSON.....	41
Document Builder – HTML Page .....	41
Application Engine.....	42
Application Engine Trace File Enhancements.....	42
Global Temporary Table in Application Engine .....	42
Global Technology.....	43
System Administration Tools Enhancements .....	44
Server Administration and Data Management .....	44
Portable PS_HOME .....	44
ServerName Parameter Removed from PSADMIN Quick Configure Menu.....	45
PeopleSoft Plug-in for Enterprise Manager 12c .....	45
Global Temporary Tables .....	47
Oracle Materialized Views .....	47
Multitenant Database Support .....	48
Partitioning for Oracle Database.....	49
Removing Support for Descending Indexes on Oracle .....	51
Monitoring and Adjusting Domain Cache during Runtime.....	52
Recycling Server Processes Based on Server Process Memory Size.....	52
Push Notification Event Framework.....	53
Changing the Default Style Sheet.....	53

Preloading Memory Cache during Domain Boot .....	54
Security Administration.....	55
Extending Secure by Default Initiative .....	55
Security Authorization Service.....	55
PIA-Based Definition Security.....	56
Enhanced Login Audits.....	57
LDAP Connection Parameters.....	57
Kerberos Documentation Removed.....	57
Automated Configuration Management.....	58
Reporting and Analytic Tools Enhancements .....	59
PeopleSoft Pivot Grids .....	59
Setting the Limit of the Pivot Grid Result Rows.....	60
Viewing PSQuery Drilling URLs in Pivot Grid Detail View.....	61
Scatter and Bubble Chart Types.....	61
Attaching PeopleSoft Trees to Dimensions .....	61
Setting Column Type Value .....	62
Setting Aggregate Value.....	62
Setting Currency Formats.....	62
Setting the Display As Option .....	62
Setting Embedded Help .....	63
Specifying the Display Mode .....	63
Specifying the Fluid Mode Options.....	63
Expanding or Collapsing All Dimensions in the Grid .....	63
Configuring Pivot Grid Views Using Pivot Grid Wizard.....	64
Publishing Pivot Grid Fluid Views as Grouplets .....	64
Creating Pivot Grid Models Directly from Query Manager .....	64
Setting Row-Level, Aggregate, and Bulk Related Actions.....	64
Displaying All Views in Pivot Grid Viewer Search Page .....	65
Resetting Layouts .....	65
Drilling Down to Details from Charts in the Grid and Chart Views .....	65
Using Component Real-Time Search and Pivot Grids in Fluid Mode .....	65
Creating Component Pivot Grid Models Using Pivot Grid Wizard.....	66
Viewing Pivot Grid Models in Fluid Mode .....	66

Using the Fluid Component Real-Time Search and Viewing the Fluid Pivot Grid Models in Mobile Interaction Platforms .....	67
Embedding Pivot Grid Fluid Subpages in Application Pages .....	67
Copying the Fluid Components between Databases .....	68
Preserving Pivot Grid Configuration and Personalizations .....	68
BI Publisher for PeopleSoft .....	69
Support for Postscript and PCL Printing for PDF Output .....	69
Support for Digital Signatures on PDF Output .....	69
Support for Updating PDF Output .....	69
Support for Rich Text Handling in BI Publisher Reports .....	70
PeopleSoft Query .....	70
Record and Field Dependencies .....	71
Default Values for Prompts .....	71
Image Support .....	71
Image URLs .....	72
Multiple Query Security Records .....	72
Find Query/Connected Query Definitional References .....	72
REST Service Enablement of Query .....	72
Support for Microsoft Excel 2007 and Higher Versions .....	73
Composite Query .....	73
nVision .....	74
Process Scheduler .....	74
Defining Report Nodes .....	74
Searching for Reports .....	74
Automated Scheduling .....	75
Dynamic Alert Sliding Windows .....	75
Reporting Web Services .....	76
RESTful QAS Web Services .....	76
Composite QAS Web Services .....	76
Tree Manager .....	76
PeopleSoft SQR .....	77
Generating XML Output .....	77
Rich Text Support .....	77

Personalizing Default Locale .....	77
Integration Tools Enhancements .....	78
PeopleSoft Integration Broker .....	78
Integration Broker Configuration Requirements .....	78
REST Services.....	78
Remote Intradoc Client (RIDC) Target Connector.....	79
PeopleSoft Component Interfaces .....	80
Errors and Warnings Worksheet.....	80
Validating Multiple Component Interfaces .....	80
MultiChannel Framework.....	80
Workflow Technology .....	81
Advanced Worklist Search.....	81
Rich Text Support .....	81
Lifecycle Management Tools Enhancements .....	82
PeopleSoft Update Manager .....	82
Change Assistant .....	83
Updated User Interface and Wizards.....	83
Environment Management Hub is used for File Deploy .....	83
Upload Target Database Information to PUM Source.....	84
Support for Applying Database Changes delivered with PeopleTools Patches .....	84
Extended Command-Line Functionality.....	84
Data Migration Workbench .....	85
Enhancements to Application Data Sets .....	85
Merge Capabilities .....	86
Support for ADS Managed Objects .....	86
Updated User Interface.....	86
PeopleSoft Test Framework.....	88
Mass Update.....	88
Interact with Application Designer Projects .....	88
Filtered Views .....	89
Reporting Enhancements .....	90
Usability Enhancements .....	90
Accessibility.....	92

Web Content Accessibility Guidelines (WGAC) 2.0 Support .....	92
Voluntary Product Accessibility Templates (VPATs).....	93
PeopleSoft Interaction Hub .....	94
Unified Navigation for the PeopleSoft Fluid User Interface.....	94
Support for Multiple PeopleSoft Application Instances .....	95
Notification Window .....	95
Document Change History .....	96



# Introduction

This section discusses:

- Purpose of this document
- Release value proposition

## Purpose of This Document

This document provides an overview of the new features and enhancements planned for Oracle's PeopleSoft PeopleTools 8.54. It is a road map intended to help you assess the business benefits of upgrading to PeopleSoft PeopleTools 8.54 and to plan your IT projects and investments.

## Related Resources

This section discusses four publications that provide in-depth technical and functional information for new and enhanced functionality in release <release number>. In many cases, the content in this document may have originated in the referenced documents.

### Statement of Direction

The statement of direction typically is published 9 to 12 months before a release. It provides a high-level overview of the major focus of product development efforts, enabling high-level business decision makers to begin preliminary upgrade planning.

The PeopleSoft Long Term Investment Plan (Statement of Direction) document (ID 1320581.1) is available on the Oracle support web site.

#### See Also

[PeopleSoft Long-Term Investment Plan](#)

### Release Value Proposition

The release value proposition provides more functional details than the statement of direction, identifies major enhancements, and articulates the expected business benefit. This document is designed to help you to determine whether new product features might warrant upgrading from an old release or embarking on a new implementation. With this information, managers will be able to initiate preliminary budget planning and begin putting together a project team to further evaluate specific products.

The Release Value Proposition for PeopleTools 8.54 document (ID 1664634.1) is available on the Oracle support web site.

#### See Also

[PeopleTools 8.54 Release Value Proposition](#)

## Prerelease Notes

Prerelease notes provide more functional and technical details than the release value proposition. This document describes how each enhancement functions within the context of the greater business process. This added level of detail should enable project teams to answer the following questions:

- What out-of-the-box functionality will change?
- What customizations may be affected?
- How will an upgrade or new implementation affect other systems?
- How will these changes affect the organization?

After the project team has reviewed and analyzed the prerelease notes, business decision makers should be able to determine whether to allocate budget and initiate implementation plans.

The Prerelease Notes for PeopleTools 8.54 document (ID 1675743.1) is available on the Oracle support web site.

### See Also

[PeopleTools 8.54 Prerelease Notes](#)

## Release Notes

Release notes are published at general availability (GA) and validate the final scope of the release. The release notes discuss the features and enhancements that are available with the GA release of each product, describing the finalized functional and technical details that will enable project teams to confirm budgets and complete implementation plans.

## Cumulative Feature Overview Tool

The Cumulative Feature Overview Tool helps you plan your upgrades by providing concise descriptions of new and enhanced solutions and functionality that have become available between your starting and target releases. You simply identify the products that you own, your existing release, and your target implementation release. With a single click, the tool quickly produces a customized set of high-level, concise descriptions of features that have been developed between your starting and target releases. In an easy-to-use, web-based format, you can easily manipulate and sort the results any way you wish, download the results to Microsoft Excel, or copy the content into other implementation planning documents.

### See Also

[Cumulative Feature Overview Tool](#)

## Video Feature Overviews

PeopleSoft creates Video Feature Overview webcasts developed by PeopleSoft Information Development with input from the PeopleSoft Development and Strategy organizations. These videos provide overviews of PeopleSoft features and functionality. This document also contains direct links to specific Video Feature Overviews in those sections where the features are being discussed.

You can view all of the Video Feature Overviews on our [YouTube Channel](#).

## PeopleSoft Information Portal

The [PeopleSoft Information Portal](#) provides you with a single entry point to locate the documentation, training, and other useful information you need to help with your implementation process and improve your daily experience with our products. The portal includes release content, product data sheets, and links to online help and support.

## Social Media

We invite you to subscribe to the following social media sites to be kept current on the latest news and information about PeopleSoft applications and technology:

- [Applications Strategy Blog](#)
- [Legislative Updates Blog](#)
- [PeopleTools and Technology Blog](#)
- [Twitter](#)
- [Facebook](#)
- [LinkedIn](#)
- [YouTube](#)

## Before You Begin

Before you upgrade to PeopleTools 8.54, always make sure that you have read any updates to the following:

- PeopleSoft upgrade documentation.
- PeopleSoft installation documentation.
- Certification information on My Oracle Support.
- Operating System, RDBMS & Additional Component Patches Required for Installation on PeopleTools 8.54.

## Platform Support Enhancements

This section describes platform support enhancements, including:

- Summary of added and changed product support.
- 64-bit development client.

### Summary of Added and Changed Product Support

The following table lists noteworthy changes to key infrastructure components planned for PeopleTools 8.54. Always check My Oracle Support for updates to this information. Keep in mind that the discontinuation of support for a component is generally due to the end of the vendor's mainstream support for the product.

Component	Added	Discontinued
Server Operating System	Oracle Linux 6 (64-bit) Windows Server 2012, 2012 R2 (64-bit) zOS 2.1	Windows Server 2008 (R1) z/OS 1.11
Client Operating System	Windows 8.1 (64-bit) <b>Note.</b> PeopleTools 8.54 clients are ported to 64-bit and require a 64-bit Microsoft Windows operating system.	Windows 7 (32-bit)
RDBMS	Oracle 12c DB2 LUW 10.1, 10.5 DB2 z/OS 11 Informix 12.1 MSS 2014	Oracle 10.2.0.5, 11.2.0.3 DB2 LUW 9.5 MSS 2008
Web Server	WebLogic 12.1.2 WebSphere 8.5.5	WebLogic 10.3.6
Browser	Chrome - current level at 8.54 GA Firefox - 24 (extended support release) & current level at 8.54 GA Internet Explorer 11 Safari 6, 7 (for Mac) Safari for iPad iOS 6, 7	IE 8 Firefox 17 Safari 4, 5 for Mac iOS 5
Application Server	Tuxedo 12.1.1.0 (Linux, Solaris, AIX, HP-UX) Tuxedo 12.1.1.0 VS2012 (Windows)	Tuxedo 11gR1

Component	Added	Discontinued
Middleware	Oracle Business Intelligence Enterprise Edition (OBIEE) 11.1.1.0.7	OBIEE 11.1.1.0.6
Search	SES – 11.2.2.2 (Min patch level BP3)	SES 11.1.2.2
COBOL	Net Express 5.1 WP9 for Windows Server 2012 IBM Enterprise COBOL for z/OS 5.1	IBM RDz 7.6, COBOL for Windows 7.6 IBM z/OS COBOL 4.1
Office	Office 2013 64-bit	32-bit Microsoft Excel

**Note.** This document **does not** contain a comprehensive list of Oracle’s support policy, nor is it intended to replace the information in the certification database on My Oracle Support. The information contained in the table is a snapshot of the current plans for platform support as of general availability for this release. **Always** refer to the certification database on the Certifications tab on My Oracle Support for the current and most comprehensive support information.

## 64-Bit Development Client

With PeopleTools 8.54 the Development Client is now built as a 64-bit application, taking advantage of higher memory addressing and improved performance.

The following applications run on the Development Client and are impacted by this enhancement:

- Application Designer.
- Data Mover.
- Change Assistant.
- nVision
- Change Impact Analyzer
- Application Engine.
- SQR.

The move to the 64-bit architecture of the PeopleTools development environment means that system administrators no longer need to acquire and configure the additional 32-bit connectivity software for the RDBMS platform.

### See Also

Product documentation for *PeopleTools 8.54: Installation for <your platform>*

## Development Tools Enhancements

This section covers changes and updates related to the development of PeopleSoft applications, including:

- PeopleSoft Fluid User Interface.
- Mobile Application Platform.
- Support for Oracle Mobile Application Framework.
- PeopleCode.
- PeopleSoft Application Designer.
- PeopleSoft Search Technology.
- PeopleTools Portal Technologies.
- PeopleSoft Documents Technology.
- Application Engine.
- Global Technology.

### PeopleSoft Fluid User Interface

This release represents a landmark for PeopleTools and the PeopleSoft user experience. With this release PeopleSoft introduces the PeopleSoft Fluid User Interface. Designed as a significant improvement over the PeopleSoft “classic” user interface, the PeopleSoft Fluid User Interface moves away from pixel-perfect page layout and provides greater flexibility with the enhanced use of cascading style sheets (CSS3), HTML5, and JavaScript.

PeopleSoft application fluid pages scale gracefully from large screen devices, such as laptops and desktops, to the reduced viewing space of tablets and Smartphones. Many commercial websites use a similar design model whereby the presentation and layout of information is adjusted dynamically to conform to the dimensions of the user’s device. The Fluid User Interface design approach gives developers just this type of control over the user experience. When a larger screen size (a screen with more “real estate”) is detected, the application content will adjust and conform accordingly to fill the space effectively. Similarly, if a smaller screen size is detected, non-essential information can be removed and the presentation of content will adjust to flow in a usable way.

Like PeopleSoft “classic” pages, fluid page definitions are maintained within PeopleSoft Application Designer, and the application developer will have the ability to define and apply conditional formatting appropriate to Smartphone, tablet, or large-screen devices. At runtime, PeopleTools will apply the corresponding formatting according to the device in use. An end user can interact with fluid pages using a conventional mouse and keyboard or using a touch interface, which is common on tablets and Smartphones. These new pages are device-independent and will operate on any certified device browser.

The PeopleSoft Fluid User Interface introduces a number of important new features to the application user experience:

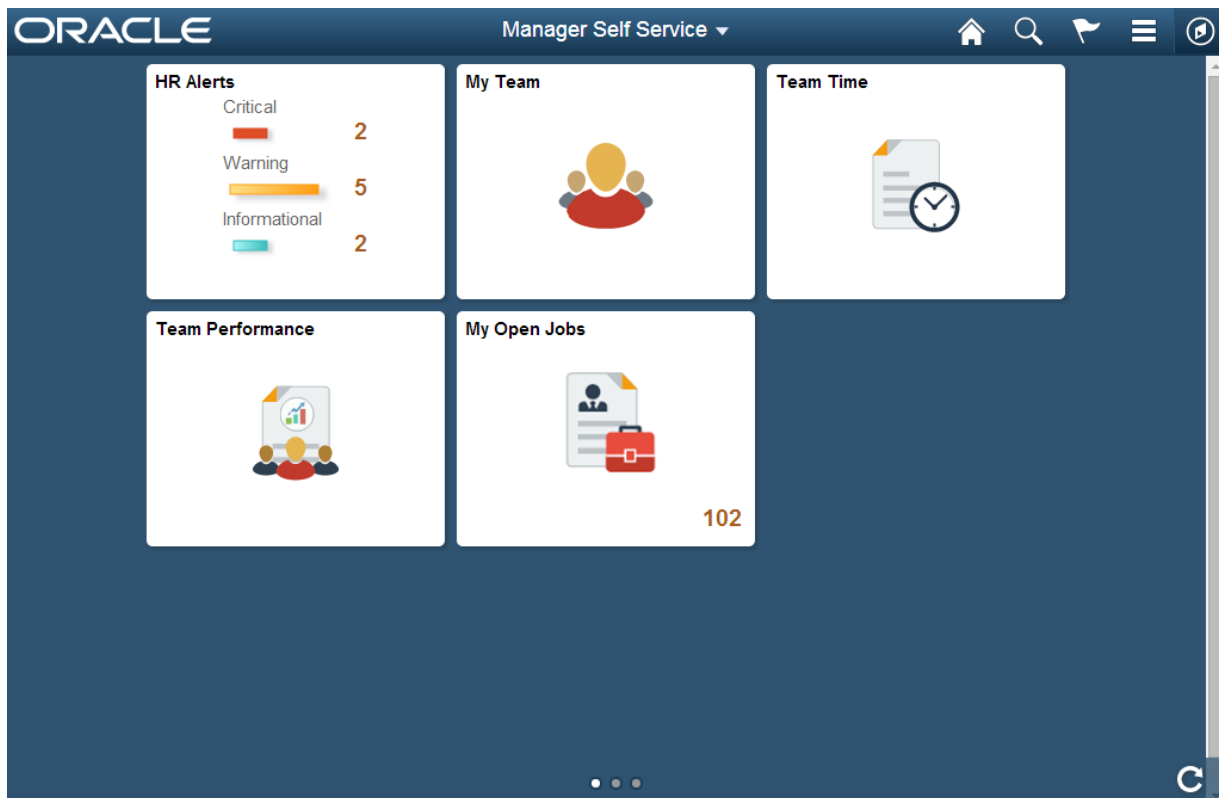
- Fluid Homepages.
- Tiles.
- Notification Framework.
- PeopleSoft Navigation Bar.

Fluid Homepages are the fluid version of an application home page. Similar to the current portal technology, the fluid homepage is where a user arrives after logging into the system. The fluid homepage brings together information that will assist a user in understanding what's happening and what needs their attention, while providing an easy way for the user to navigate to key parts of the PeopleSoft system. A system can contain multiple fluid homepages for different uses. Customers can easily create new homepages and publish them to users, groups of users, or specific roles. End users can create their own personal homepages, where they might associate information of relevance or importance to themselves.

Fluid homepages use a new navigational structure: the tile. Tiles, also called grouplets, provide a discrete view to a segment of the PeopleSoft application. It is a structure on the homepage that will help the user navigate to a fluid page (or even a classic page), but the tile also can provide valuable information in its own right. Designed to be more than a button on a homepage, the tile leverages the ability to display dynamic content from PeopleSoft, including visual content from PeopleSoft Pivot Grids, or other information sources. A tile on a fluid homepage can be compared to a pagelet on a classic homepage.

The following example displays a sample fluid homepage, Manager Self Service, which contains a handful of tiles. The HR Alerts tile displays timely information to help a manager take appropriate action, while the other tiles, when pressed, allow the user to access selected business transactions, streamlined for fluid display.





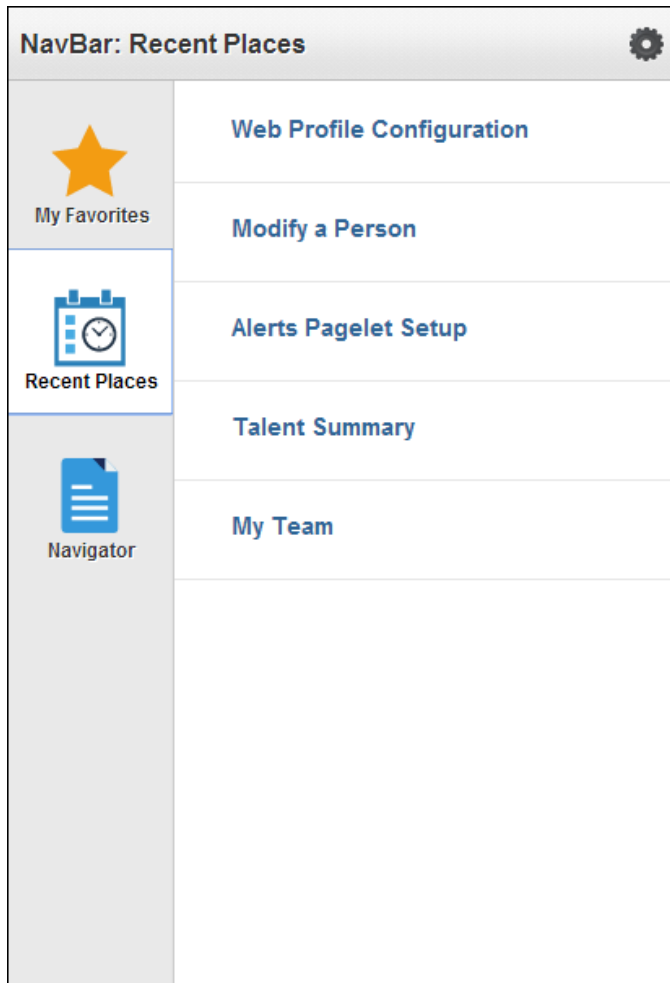
PeopleSoft Fluid User Interface – Manager Self Service homepage

The Notification Framework is a mechanism employed by PeopleTools that updates a widget in the homepage header. As data is updated within applications, the notification widget reflects a sum of all notifications from all applications represented in the home page. It shows users the number of items that need their attention and enables them to view and act on those items using the Notification Window. For example, if an application provides the number of outstanding invoices yet to be approved by the user, the Notification Framework might be used to update the count dynamically as new invoices are generated.

The new PeopleSoft Navigation Bar (also referred to as NavBar) offers faster and more intuitive navigation across the PeopleSoft application. The Navigation Bar is a new fluid structure that is always available as a dynamic window that slides out from the side of the page. On fluid-enabled systems, the PeopleSoft Navigation Bar will be available even on PeopleSoft classic pages, creating a seamless experience for users as they navigate the system.

The PeopleSoft Navigation Bar enables users to access information about other areas of the application directly and, upon selection, to navigate to those pages. It includes the entire PeopleSoft menu, user favorites, and recently used links, but also navigation tiles that will bring users to the parts of the application that are most important to them. Users can personalize the PeopleSoft Navigation Bar easily by arranging the icons or even by pinning new application pages to the bar as they work.

The following example illustrates the PeopleSoft Navigation Bar (NavBar), with the Recent Places option selected. In this case, the user can easily return to transactions with which they have been using most recently. If desired, the user might also select the My Favorites option, which displays user-defined favorites, similar to the current functionality using the Favorites menu in PeopleTools Portal. Selecting the Navigator option displays all the menus to which the user has access for traditional navigation, similar to the current functionality of the Main Menu in the PeopleTools Portal.



### PeopleSoft Navigation Bar

As previously mentioned, fluid pages are designed with a view to the mobile user. Mobile devices such as tablets and Smartphones include the ability for the user to change the page orientation (by turning the device) from Portrait (tall) to Landscape (wide). A responsive page will automatically adjust to fill the space appropriately. In Portrait mode, where width is limited, a grid that would normally display multiple columns might adjust to show the information row-by-row instead. PeopleTools allows developers to define the behavior required of an application page to accommodate these types of dynamic changes.

Page designers may also elect to alter the type or nature of information that appears to the user, depending on the form factor of the device. That is, larger displays might show more associated information, related content, or analytic charts; whereas a Smartphone page might be designed to show only the information necessary to complete the steps of a transaction. PeopleTools enables an application developer to determine exactly what information will appear to a user in these scenarios.

In addition, the PeopleSoft Fluid User Interface supports device-side capabilities for mobile devices such as the embedded camera for image uploads. With PeopleTools, application developers can construct modern mobile applications and deploy them in conjunction with the deep functionality of PeopleSoft applications to create a powerful, dynamic experience for users.

By default, the system allows fluid access from Smartphones and tablets; on the desktop PeopleSoft classic is the default and users do not see fluid pages on the desktop by default. If you intend to provide fluid page access to desktop users, system administrators must enable Fluid Mode for the system, which entails reviewing only a few settings in the web profile and the PeopleTools Options page. Keep in mind that fluid pages may require a higher minimum level browser version than required by the classic pages. For example, a classic page may require Internet Explorer 9, while the fluid version of that page may require Internet Explorer 11. The system detects the browser version and only displays fluid pages on device browsers meeting the minimum requirements for fluid page display.

### See Also

Product documentation for *PeopleTools 8.54: Fluid User Interface Developer's Guide*

Product documentation for *PeopleTools 8.54: Applications User's Guide, "Working With PeopleSoft Fluid User Interface"*

## Mobile Application Platform

With release 8.54, PeopleSoft is delivering, for the first time, the ability to create a responsive user interface using standard technologies such as HTML5, cascading style sheets (CSS3), and JavaScript.

Applications built using the Mobile Application Platform (MAP) will provide a completely different experience than those built using traditional PeopleTools components and pages. Applications built with MAP can include media queries that allow applications to scale from Smartphones, to mini-tablets, to full-size tablets, and that adjust the user interface for the device perspective that is being used. The framework allows you to develop applications with touch interfaces that look and operate similarly to native interfaces on mobile devices.

MAP supports a web-only development model for the majority of the application development. The document-based data structures, page layouts, and styles are all defined in the PeopleSoft Pure Internet Architecture. Business logic processing is done through PeopleTools application class PeopleCode built in PeopleSoft Application Designer. Additional user-interface libraries can be easily plugged in and accessed on pages.

While MAP is similar in many ways to the PeopleSoft Fluid User Interface delivered with PeopleTools 8.54, there is a single major difference. That difference is that MAP reads and writes data through RESTful web services that pass through the integration gateway and provide the communication layer between MAP applications and the database.

Using RESTful services as the foundation of the framework offers these significant differences:

- Since all parts of the application are based on REST services, an open integration model that enables an application to navigate from one application to another, including third-party applications, is inherent in the design.

- You can develop applications that access content from different systems, making it a strong development platform when there is a need to collate information from various systems, such as in clustered environments.

It is important to note that while the framework is built on REST services, developing and manipulating REST services is not required; the framework takes care of building the services in the background.

The security model for MAP applications is also very different from the PeopleSoft Fluid framework. MAP applications can consist of one or more layouts. Since you can determine and assign different levels of security for each layout, security can be different when navigating through the application.

Another difference between MAP and the PeopleSoft Fluid User Interface is that developers can create templates that contain default styles, formatting, media queries, and other options that affect the appearance of mobile application pages. When used, templates provide style consistency among mobile application pages and mobile applications. If you are building multiple mobile applications and want them to have the same look and feel, using templates can help you achieve this objective, and templates can be especially helpful if different organizations, departments, and teams are involved in developing mobile applications.

The Mobile Application Platform is new technology that gives customers more options when designing and building responsive applications for mobile devices.

#### See Also

Product documentation for *PeopleTools 8.54: Mobile Application Platform*

## Support for Oracle Mobile Application Framework

Beginning with PeopleTools 8.54.09, PeopleTools supports the use of the Oracle Mobile Application Framework (MAF) as an option for deploying PeopleSoft fluid or MAP applications on mobile devices (smartphones and tablets).

PeopleTools supports using the Remote URL option for running PeopleSoft applications in the MAF container on a mobile device running the iOS or Android operating system.

**Note.** Using MAF for deploying PeopleSoft applications is not required for mobile devices. It is an option some sites may wish to utilize.

#### See Also

My Oracle Support Document: *PeopleSoft Fluid User Interface Documentation Updates [1909955.1]*  
Download the document *PeopleTools 854 MAF Support.pdf*.

<http://www.oracle.com/technetwork/developer-tools/maf/overview/index.html>

## PeopleCode

This section covers changes and updates to PeopleCode in the following documentation:

- PeopleCode Developer's Guide
- PeopleCode API Reference.
- PeopleCode Language Reference.

## PeopleCode Developer's Guide

This section covers changes to developing PeopleCode programs, including:

- File attachment enhancements.
- Compiling PeopleCode programs.
- Auto-complete feature in the PeopleCode Editor.

### File Attachment Enhancements

Enhancements to working with file attachments include:

- Virus scanning now applies to files uploaded with the MAddAttachment built-in function.
- PeopleTools now includes utility pages that allow CopyAttachments and CleanAttachments to be run as batch processes to avoid timeout issues.

#### See Also

Product documentation for *PeopleTools 8.54: PeopleCode Developer's Guide*, "Working With File Attachments"

### Compiling PeopleCode Programs

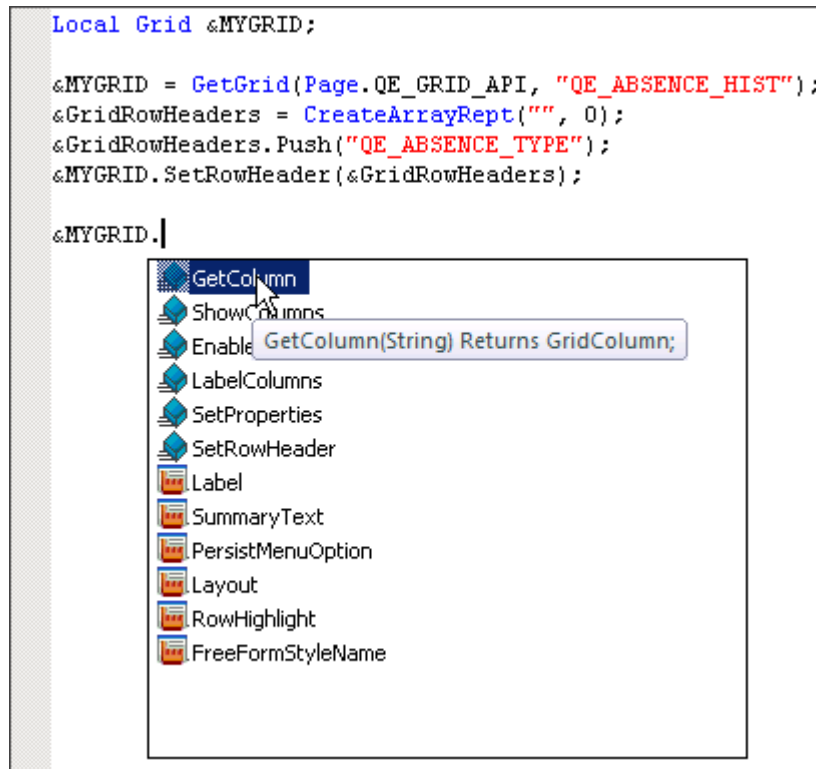
Compiling PeopleCode programs in Application Designer or on the command line provides the option to compile and save directive PeopleCode.

#### See Also

Product documentation for *PeopleTools 8.54: PeopleCode Developer's Guide*, "Compiling All PeopleCode Programs at Once"

### Auto-Complete Feature in the PeopleCode Editor

To improve developer productivity, the PeopleCode Editor now includes an auto-complete feature for methods and properties of built-in classes and application classes, built-in functions, system variables, and constants. In addition, for any item selected in the auto-complete list, a tool tip is displayed showing the item's data type, parameters, parameter data types, and return data type when applicable.



Auto-complete feature in the PeopleCode Editor

### See Also

Product documentation for *PeopleTools 8.54: PeopleCode Developer's Guide*, "Using the PeopleCode Editor," Using the Auto-Complete Feature

## PeopleCode API Reference

This section covers changes to the PeopleCode API, including:

- Charting enhancements.
- New classes.
- New methods.
- New properties.
- Deprecated items.

### Charting Enhancements

This section covers changes to developing charts using the PeopleCode charting classes, including:

- Chart class enhancements.
- RatingBoxChart class enhancements.
- Gauge classes.

- Enhancements shared by several classes.

The PeopleTools 8.54 product documentation contains complete information on charting classes and enhancements. In addition, these release notes list new classes, methods, and properties.

## See Also

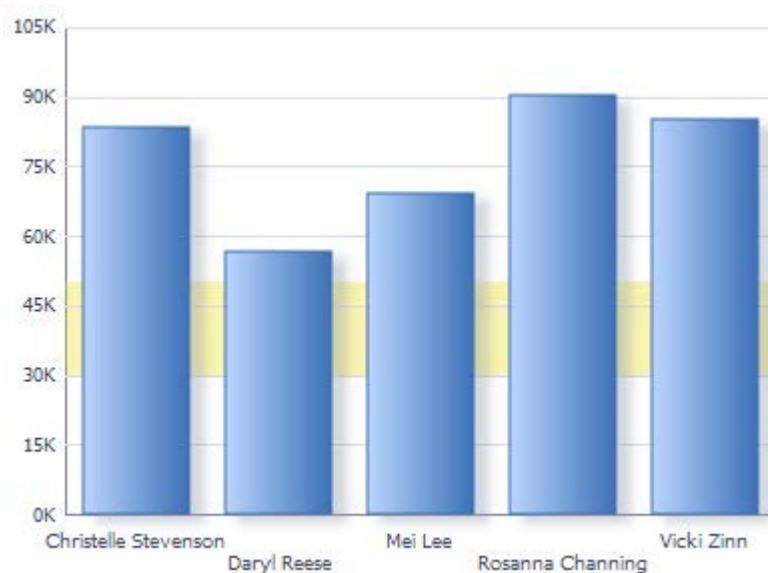
[New Classes](#), [New Methods](#), and [New Properties](#)

Product documentation for *PeopleTools 8.54: PeopleCode API Reference*, “Charting Classes”

## Chart Class Enhancements

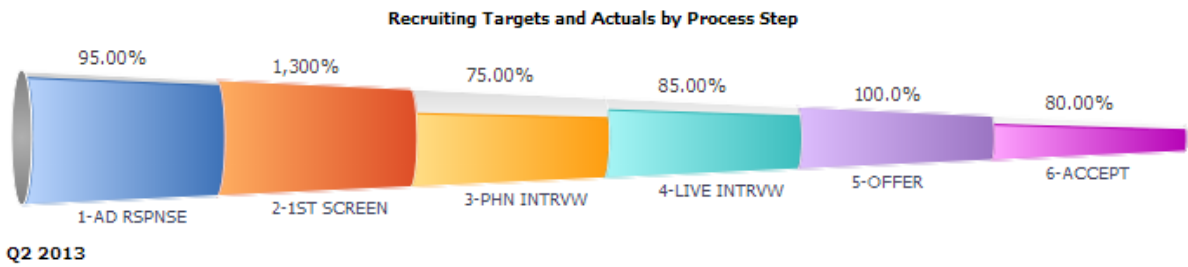
In PeopleTools 8.54, the Chart class has been enhanced with these features and other features not listed here:

- Reference areas – A reference area can be displayed in conjunction with a chart as a band of color drawn based on numeric values along a chart axis. For each band of color, you would create a separate instance of the ReferenceArea class.



A bar chart with a reference area displayed behind the chart

- Reference lines – A reference line can be displayed in conjunction with a chart as a colored line drawn based on a numeric value along a chart axis. For each line, you would create a separate instance of the ReferenceLine class.
- Funnel charts – A funnel chart typically graphs two sets of data: actual amounts versus target amounts.



A funnel chart displaying actual data versus target data

- Line smoothing – Using the `IsLineChartSmoothing` property allows line charts to be displayed with smoothed lines.
- Interactive charts – Using the `IsChartDrillable` property, the chart background (that is, the entire chart control) can be made interactive. (This is in addition to the chart data points, which can already be made interactive by using the `IsDrillable` property.)

### RatingBoxChart Class Enhancements

In PeopleTools 8.54, the `RatingBoxChart` class has been enhanced with these features:

- Quadrant labels – You can add instances of the `QuadrantSchema` class to your rating box chart to provide labels for specific quadrants in the rating box chart.
- Hiding axis labels – Setting the `ShowAxisLabels` property to `False`, you can hide the x- and y-axis labels to reduce clutter on a rating box chart. This can be useful when quadrant labels are displayed.





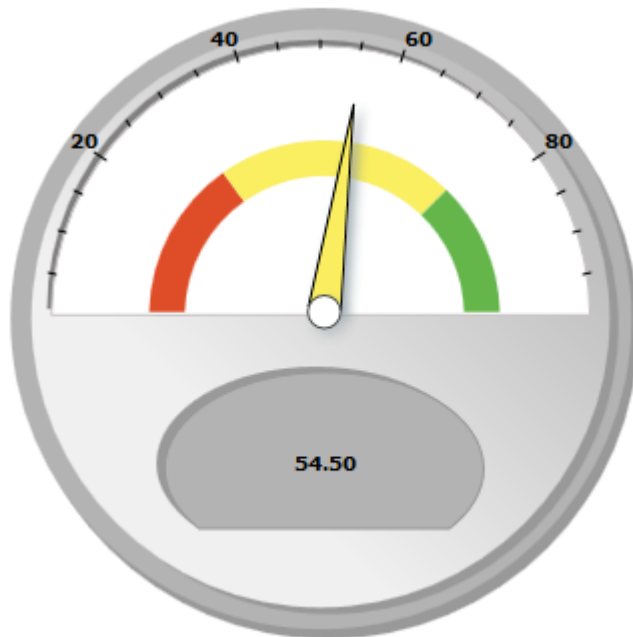
A rating box displaying quadrant labels (with axis labels hidden)

- Related actions – Using the EnableRelatedActions property, you can specify whether a user can click on a node in the rating box chart to invoke related actions for the node as defined for the PTCHART\_NODE page field.

**Gauge Classes**

In PeopleTools 8.54, three gauge classes have been added that allow you to display metrics in several common formats, including dials, status meters, and LEDs. A gauge is used to visually display a single metric. The Threshold class, used in conjunction with the three gauge classes, provides a way to add reference areas and color coding to your gauges.

## Sales of new Cars



**Cars Sold**

**54.50**

■ Low ■ Med ■ High

A dial gauge with thresholds

### Enhancements Shared by Several Classes

In PeopleTools 8.54, the following enhancements are common to several charting classes:

- HTML5 output – Chart class charts and gauge charts are produced as HTML5 output.
- Animations – Chart class charts and gauge charts use the `AnimationType` and `AnimationDuration` properties to control animation of the charts.
- Accessibility – Chart class charts, gauge charts, and Gantt charts can display WCAG 2.0-compliant representations of the chart data.
- Fluid components – Chart class charts and gauge charts can be displayed in PeopleSoft components.
- Custom style class definitions – You can create custom style class definitions in Application Designer that are identified by a common suffix. Then, Chart class charts and gauge charts can use these custom definitions when the same suffix is specified by the `AdditionalStyleSuffix` property.

### New Classes

In PeopleTools 8.54, the following new classes have been added to the PeopleCode API:

- BI Publisher classes:
  - `DigitalCertStore` class.

- IPDFSignature class.
- Charting classes:
  - DialGauge class.
  - LEDGauge class.
  - QuadrantSchema class.
  - ReferenceArea class.
  - ReferenceLine class.
  - StatusMeterGauge class.
  - Threshold class.
- Mobile Application Platform (MAP) classes:
  - Map class.
  - MapElement class.
  - MapPage class.
- PSEvent class.

The PeopleTools 8.54 product documentation contains complete documentation on each new class including constructors, methods, and properties as is appropriate for each class. To save space, the new methods and properties for these new classes have not been listed in these release notes.

### See Also

Product documentation for *PeopleTools 8.54: PeopleCode API Reference*

### New Methods

In PeopleTools 8.54, the following new methods have been added to the PeopleCode API:

- Chart class, SetFunnelDataActual method.
- Chart class, SetFunnelDataTarget method
- Chart class, SetReferenceArea method
- Chart class, SetReferenceLine method
- Field class, AddFFClass method.
- Field class, GetDNDField method.
- Field class, GetDNDRow method.
- Field class, GetDNDRowset method.
- Field class, GetDNDDTargetField method.

- Field class, GetDNDTargetRow method.
- Field class, GetDNDTargetRowset method.
- Field class, ReplaceFFClass method.
- Field class, SetGroupletActionUrl method.
- Field class, SetGroupletDisplayIn method.
- Field class, SetGroupletID method.
- Field class, SetGroupletImage method.
- Field class, SetGroupletMOptions method.
- Field class, SetGroupletTargetID method.
- Field class, SetGroupletTimer method.
- Field class, SetGroupletType method.
- Field class, SetGroupletUrl method.
- Grid class, SetRowHeader method.
- IntBroker class, DefaultLocalNode method.
- IntBroker class, DefaultPortalName method.
- IntBroker class, DeleteLayoutCache method.
- IntBroker class, GenLayoutHTML method.
- IntBroker class, GetImageUrl method.
- IntBroker class, MAPLogout method.
- IntBroker class, UpdateDocument method.
- RatingBoxChart class, SetQuadrantSchemas method.
- Request class, FormFactor method.
- Request class, GetDeviceInfo method.
- SearchResult class, GetImageUrl method.

**Note.** The preceding list does not include the methods that are new due to the addition of a new class in the PeopleCode API. However, the new classes themselves are listed in these release notes.

The PeopleTools 8.54 product documentation contains complete information on each new method.

### See Also

[New Classes](#)

Product documentation for *PeopleTools 8.54: PeopleCode API Reference*

## New Properties

In PeopleTools 8.54, the following new properties have been added to the PeopleCode API:

- Chart class, AdditionalStyleSuffix property.
- Chart class, AnimationType property.
- Chart class, AnimationDuration property.
- Chart class, FunnelPercentMeasure property.
- Chart class, IsXAxisInteger property.
- Chart class, IsChartDrillable property.
- Chart class, IsLineChartLineSmoothing property.
- Chart class, LineChartDataGlyphSize property.
- Chart class, SetChartURL property.
- Field class, Draggable property.
- Field class, Droppable property.
- Field class, FreeFormStyleName property.
- Field class, HtmlAttributes property.
- Field class, HtmlInputType property.
- Field class, IsHyperlink property.
- Field class, JavaScriptEvents property.
- Field class, PlaceholderText property.
- Grid class, FreeFormStyleName property.
- Grid class, Layout property.
- Grid class, RowHighlight property.
- GridColumn class, RowHeader property.
- RatingBoxChart class, EnableRelatedActions property.
- RatingBoxChart class, ShowAxisLabels property.
- Request class, BrowserDeviceFormFactor property.
- Request class, BrowserDeviceType property.
- Request class, BrowserFluidCapable property.

- Request class, BrowserPlatformClass property.
- Request class, BrowserTypeClass property.
- Request class, ExtraLarge property.
- Request class, Large property.
- Request class, Medium property.
- Request class, Small property.
- SearchQuery class, IncludeImages property.

**Note.** The preceding list does not include the properties that are new due to the addition of a new class in the PeopleCode API. However, the new classes themselves are listed in these release notes.

The PeopleTools 8.54 product documentation contains complete information on each new property.

### See Also

#### [New Classes](#)

Product documentation for *PeopleTools 8.54: PeopleCode API Reference*

### Deprecated Items

The following PeopleCode was deprecated in PeopleTools 8.54:  
Gantt class, SetTaskExpanded method.

## PeopleCode Language Reference

This section covers changes to the PeopleCode language, including:

- New built-in functions and language constructs.
- New meta-SQL.
- New system variables.
- New meta-HTML.
- Enhanced built-in functions.

### New Built-In Functions and Language Constructs

In PeopleTools 8.54, the following new built-in functions have been added to the PeopleCode language:

- AddJavaScript.
- AddMetaTag.
- AddOnLoadScript.
- AddStyleSheet.

- CreateBreadcrumb.
- CreateSearchRowset.
- DateTimeToUserFormat.
- DoModalComponentPopup.
- DoModalPopup.
- ExecuteSearchSavePC.
- GetAddSearchRecName.
- GetAttachmentURL.
- GetBreadcrumbs.
- GetDialGauge.
- GetLEDGauge.
- GetPageTitle.
- GetPageType.
- GetReferenceArea.
- GetReferenceLine.
- GetSearchRecName.
- GetStatusMeterGauge.
- GetThreshold.
- IsAddMode.
- IsBackEnabled.
- IsFluidMode.
- IsFluidSearchStart.
- IsGroupletRequest.
- IsHomeEnabled.
- IsLogoutEnabled.
- IsNavBarEnabled.
- IsNextInListEnabled.
- IsNotifyEnabled.
- IsPinEnabled.

- IsPrevInListEnabled.
- IsSaveEnabled.
- IsSearchEnabled.
- OverrideCNAVDisplayMode.
- ResizeImage.
- SetAddMode.
- SetThemeld.
- SetTransferAttributes.
- ShouldSuppressCREF.
- UIDisplayMode.

In PeopleTools 8.54, the following new directive constructs have been added to the PeopleCode language:

- #If.
- #ToolsRel.

#### See Also

Product documentation for *PeopleTools 8.54: PeopleCode Language Reference*, “PeopleCode Built-in Functions and Language Constructs”

#### New Meta-SQL

In PeopleTools 8.54, the following meta-SQL elements have been added to the PeopleCode language:

- %SelectDummyTable.
- %SqlHint.

#### See Also

Product documentation for *PeopleTools 8.54: PeopleCode Language Reference*, “Meta-SQL Reference”

#### New System Variables

In PeopleTools 8.54, the following system variable has been added to the PeopleCode language:  
%MAP\_Market.

#### See Also

Product documentation for *PeopleTools 8.54: PeopleCode Language Reference*, “System Variables Reference”



## New Meta-HTML

In PeopleTools 8.54, the following meta-HTML elements have been added to the PeopleCode language:

- %BB.
- %BP.
- %BV.
- %ContentReference.
- %ExplainMessage.
- %FORMFACTOREXTRALARGE.
- %FORMFACTORLARGE.
- %FORMFACTORMEDIUM.
- %FORMFACTORSMALL.
- %StyleSheet.

### See Also

Product documentation for *PeopleTools 8.54: PeopleCode Language Reference*, “Meta-HTML Reference”

## Enhanced Built-In Functions

In PeopleTools 8.54, the following built-in functions have been enhanced:

- InsertImage built- now supports PNG and SVG file formats.
- Virus scanning now applies to files uploaded with the MAddAttachment built-in function.
- RevalidatePassword now automatically accounts for scenarios in which the signon ID and the ID in effect after signon differ, and it requests revalidation based on the signon ID.

### See Also

Product documentation for *PeopleTools 8.54: PeopleCode Language Reference*, “PeopleCode Built-in Functions and Language Constructs”

# PeopleSoft Application Designer

This section discusses enhancements to PeopleSoft Application Designer

## Developing PeopleSoft Fluid User Interface Applications

PeopleSoft Fluid applications are built in large part the same as you build a traditional or classic PeopleSoft application, using the same general application development steps in Application Designer. You create fields, records, and build SQL tables just as you would a traditional PeopleSoft application, but when it comes to designing pages and configuring components, you depart somewhat from the steps and techniques used for building traditional PeopleSoft applications.

Application Designer is the main development tool used for building both traditional and fluid PeopleSoft applications, and PeopleCode is the main programming language used to interact with component processing events and implement business logic. However, with fluid applications, the application implementation teams that will develop and/or customize PeopleSoft fluid applications will need expertise in these additional areas (listed in order of importance and recommended experience):

- CSS 3
- HTML 5
- JavaScript (if required)

While you use the same main development tools in Application Designer, the options related to fluid development are clearly separate. For example, the properties dialog box for components, pages, and page controls, each have a separate Fluid tab, displaying the options for that definition or control if you are developing for fluid display.

Perhaps the most notable difference for developers between creating classic and fluid PeopleSoft applications is the process of designing page layout. With the traditional PeopleSoft application, the interface display is defined in Application Designer using a fixed layout, based on and bound to a pixel system. In the fixed layout, a developer can meticulously align fields, labels, group boxes, and so on, and be reasonably assured the page will appear in the browser running on a desktop or laptop just as it appears in the design-time layout. The traditional PeopleSoft application development design-time layout provides a WYSIWYG (what you see is what you get) scenario.

With fluid page layout, there is no need to align and position fields and controls manually so that they look just so. In fact, to some extent, page layout for fluid pages consists of ensuring the field or control exists on the page in generally the right order. All of the other aspects of layout and positioning and appearance are controlled by CSS-based freeform style sheets. Using CSS for layout and positioning provides the flexible, dynamic appearance of the page, but it will be an adjustment for many developers familiar with classic PeopleSoft development. Becoming adept with CSS 3 styling techniques is paramount to creating and customizing fluid applications.

### See Also

Product documentation for *PeopleTools 8.54: Fluid User Interface Developer's Guide*, "Understanding PeopleSoft Fluid User Interface"

## Support for PNG and SVG Formats for Image Fields

Application Designer supports the creation of image fields using PNG and SVG formats. While PeopleSoft Application Designer can create image file definitions that are of Portable Network Graphics (PNG) or Scalable Vector Graphics (SVG) formats, these image file definitions are visible only in PeopleSoft Internet Architecture (PIA).

## See Also

Product documentation for *PeopleTools 8.54: Application Designer Developer's Guide*, "Creating Field Definitions," Creating New Field Definitions, Specifying Image Field Attributes

## Improved Definition Reference Search Functionality

In Application Designer, when using the Find Definitions References feature for field and record definitions, you can now search within a set of specific definition types. This focuses the search for references, yielding fewer results, making searches more efficient.

When searching for definition references for a field or record definition, a new dialog box appears enabling you to select from a list of definition types in which to search so as to narrow the scope of the search. For example users can search only pages when looking for references to a specific field definition instead of all the references to that field, which would require searching PeopleCode, records, component interfaces, and so on.

## See Also

Product documentation for *PeopleTools 8.54: Application Designer Developer's Guide*, "Using PeopleSoft Application Designer," Working with Definitions, Finding Definition References

## Toolbar Buttons Provide Quicker Access to Page and Record PeopleCode

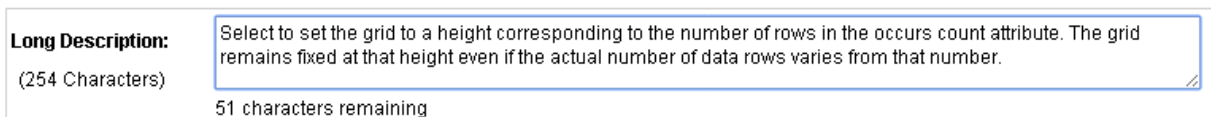
New toolbar buttons for viewing page PeopleCode and record PeopleCode improve developer productivity. Page PeopleCode and record PeopleCode can be viewed with fewer clicks using the toolbar rather than the menu item. With a page definition or a record definition open in the Application Designer workspace, the dynamic toolbar now displays a button for this quick access to the associated PeopleCode for that page or record definition.

## See Also

Product documentation for *PeopleTools 8.54: Application Designer Developer's Guide*, "Using PeopleSoft Application Designer," Using the PeopleCode and Other Programming Language Editors

## Long Edit Box Character Limit Counter

Long edit boxes do not limit the number of characters that a user can enter in the browser, regardless of any limits defined in the underlying record field. As such, characters entered by the user that exceed the field length of the field definition may be truncated. To help users avoid this situation, you can select Enable Long Edit Counter on the Long Edit Box Properties, Use tab. With this option on, a counter appears below the long edit box on the page, notifying the user how many characters can be entered before reaching the field limit (N characters remaining).



Edit box character limit counter

### See Also

Product documentation for *PeopleTools 8.54: Application Designer Developer's Guide*, "Using Page Controls," Using Edit Boxes and Long Edit Boxes

## Disabling Row Highlighting for Grids

If you would prefer to disable the row highlighting feature for grids, you can now select the Disable Row Highlighting display option on the Use tab of the Grid Properties dialog box.

### See Also

Product documentation for *PeopleTools 8.54: Application Designer Developer's Guide*, "Using Scroll Areas, Scroll Bars, and Grids," Using Grids

## SQR-Based Reports for PeopleTools Cross-Reference Reports

In PeopleTools 8.54, you can now use SQR reports instead of Crystal reports when you run PeopleTools cross-reference reports. SQR cross-reference reports replace the existing Crystal cross-reference reports.

### See Also

Product documentation for *PeopleTools 8.54: Application Designer Developer's Guide*, "Running PeopleTools Cross-Reference Reports"

# PeopleSoft Search Technology

PeopleTools introduced the PeopleSoft Search Framework in PeopleTools 8.52, providing a powerful new way for end users to find business data, act on it, and navigate the PeopleSoft system.

PeopleTools 8.54 extends the Search Framework for use with the PeopleSoft Fluid User Interface, providing a rich search experience that is optimized for small form factor devices, such as tablets and Smartphones, as well as larger monitors.

In addition, individual applications can customize contextual search pages to provide a richer experience where it may be necessary or valuable to the overall user experience.

The Search Framework now extends Global Search behavior to Component Search for fluid applications. With PeopleTools 8.54, Component Search pages will leverage Pivot Grid functionality, presenting search results in both visual charts and columnar lists. Pivot Grids' ability to drill from charts as well as incorporate rich facet and filter functions greatly improves the experience of analyzing and identifying target information. Related actions are also available across all types of search results. These enhancements are incorporated in fluid pages. Search results and interactivity in component search are optimized when viewed from a Smartphone to improve productivity and ease of use. Classic PIA pages continue to use the component search features of previous releases.

Search Indexes for Reports: PeopleSoft's Global Search feature now supports the inclusion of report contents in the preparation of global search indexes. This ability allows users to search for keywords in the PeopleSoft database and for the search to return results based on report content in the Report Repository rather than just the PeopleSoft transactional database. Note that if you are in a fluid-compatible browser and fluid is enabled, the end users in classic mode will see the fluid global search page as opposed to the classic global search page.

Other enhancements to the PeopleSoft Search Framework include:

- Facets can now be based on numerical and date ranges, allowing more ways for users to sift through search results.
- Images can now appear in search results.
- Content in the report repository can now be indexed and searched.
- Indexes built from file and web sources can now be included in the Global Search results by selecting the All category.

### See Also

Product documentation for *PeopleTools 8.54: Search Technology*, "Administering PeopleSoft Search Framework," Implementing Report Repository Search

Product documentation for *PeopleTools 8.54: Search Technology*, "Creating Search Categories," Selecting Facet Settings

Product documentation for *PeopleTools 8.54: Search Technology*, "Defining Search Definition Queries," Working with Images

## PeopleTools Portal Technology

PeopleTools Portal Technology includes these enhancements in PeopleTools 8.54:

- Activity guide enhancements.
- Branding framework.
- Related content and related actions enhancements.
- Switching between classic and fluid user interfaces.
- Pagelet Wizard enhancements.
- Conditional navigation enhancements.
- Deprecated features.

### Activity Guide Enhancements

Activity guides are a useful PeopleTools feature that helps guide users through complex or infrequently performed processes. Activity guides provide a step-by-step flow, potentially reducing user errors and process execution time. By building on the self-service scheduling feature in PeopleTools 8.54, activity guides can now include a batch process as a step. This feature enables activity guides to encompass both transactional and batch processes in a single guided process.

PeopleSoft applications deliver a number of activity guides out of the box, but customers can create their own using PeopleTools. With the Setup Activity Guide WorkCenter that is included in PeopleTools 8.54, the development of activity guide templates and instances becomes easier than it was previously. This WorkCenter provides a complete step-by-step process for creating, configuring, maintaining, and deploying activity guides within a PeopleSoft application.

Activity guides can also be cloned in whole so that guided processes and flows that are similar yet slightly different can be easily maintained and deployed. For example, if running a particular process varies by role, a base activity guide might be created and cloned, allowing a customer to configure the variations for each role.

#### See Also

Product documentation for *PeopleTools 8.54: Portal Technology*, “Developing and Deploying Activity Guides”

### Branding Framework

PeopleTools now provides a greatly expanded branding framework that is powerful and flexible, bringing the capability of managing the look and feel to the PeopleSoft application without requiring PeopleSoft Interaction Hub. With PeopleTools 8.54, many common branding activities, including managing content associated with the overall site style, are now performed online rather than requiring the use of Application Designer. In addition, PeopleTools supports component-based branding, providing the ability to apply a consistent appearance when rendering content from multiple providers on the same page.

With PeopleTools branding, common actions, such as layout manipulation, style sheet and image use, and JavaScript injection, can be managed online through the browser. For example, these tasks can be easily performed within the delivered online pages:

- Manage configurable header and footer layouts.
- Assemble branding themes, and assign those themes by portal or by user attributes.
- Preview style changes online.
- Set system-wide settings for the default theme, the default style sheet for classic components, and the default style sheet for fluid components among other settings.
- Create and deploy custom themes and skins, either site-wide or within individual components.
- Inject system-wide or component-level JavaScript and CSS snippets.
- Style iScript content as managed objects using meta-HTML tags.

From a life cycle perspective, administrators can migrate branding objects from any PeopleSoft application using Application Data Sets.

While PeopleSoft Interaction Hub has long provided a branding framework, much of that functionality has been replaced by PeopleTools 8.54 branding features. PeopleSoft Interaction Hub still offers some optional branding capabilities, including a branding WorkCenter, which are particularly valuable across a cluster that includes multiple PeopleSoft applications. In addition, style sheets can be easily copied from PeopleSoft Interaction Hub for use in other applications across the cluster.

### See Also

Product documentation for *PeopleTools 8.54: Portal Technology*, “Using PeopleTools Branding Features”

## Related Content and Related Actions Enhancements

Related content enables users to access related information in the context of a transaction; related actions enable users to take action on information in context, without navigation. While these features have been part of PeopleTools for several releases, PeopleTools 8.54 offers some important enhancements.

Related actions now provide a mechanism to associate a field change event of a particular field to an existing related action widget. This simplifies configuration. It means developers no longer have to define an application class-based related content service for each action and copy their FieldChange PeopleCode to the application class. This reduces duplication of code and simplifies maintenance.

In addition, when a related action widget includes only a single action for a user, that single link will be displayed directly on the page rather than displaying a drop-down menu with just one item. This streamlines user actions and eliminates mouse clicks.

Related content data migrated as ADS objects between PeopleSoft databases in PeopleTools 8.53 did not allow customers to preserve certain common configuration changes they had applied on the target databases. Now, PeopleTools 8.54 enables customers to preserve these configurations using the compare and copy processes of Data Migration Workbench. This simplifies the process of taking maintenance on related content data.

Prior to PeopleTools 8.54, the security authorization service could restrict access to a limited set of related content service types, such as component and iScript-based services. Now, the security authorization service can perform authorization checks for application class-based services as well. Data security checks can also be performed for iScript, pagelet, and PeopleSoft query content types, making the implementation of security easier when both basic PeopleTools security and row-level security are required.

## See Also

Product documentation for *PeopleTools 8.54: Portal Technology*, “Developing and Configuring Related Content Services”

## Switching between Classic and Fluid User Interfaces

This section describes switching between classic and fluid user interfaces.

### Classic to Fluid (to Classic)

When a user navigates from a classic page to a fluid page, they can return back to the classic page by clicking on the fluid Back button in the top left of the page.

### Fluid to Classic (to Fluid)

When a user is on a fluid page and navigates to a classic page, a link back to the fluid page is added to the classic breadcrumbs. This will allow the user to get back into fluid if they wish.

Classic breadcrumbs show only the last fluid component visited. The system does not display multiple fluid components in the classic breadcrumbs.

## Pagelet Wizard Enhancements

This section describes enhancements to Pagelet Wizard.

### Publishing a Pagelet Wizard Data Source as a Grouplet (Tile)

When publishing an HTML or free text data source as an embeddable pagelet, you have the option to create a grouplet (tile) definition for a fluid homepage. To complete publishing, you select a content reference as the target page for the tile, which adds the pagelet as the content reference's grouplet attribute. Then, a user can add the tile to a fluid home page; when the user presses or clicks the tile, the target content is displayed.

## See Also

Product documentation for *PeopleTools 8.54: Portal Technology*, “Using Pagelet Wizard to Create and Manage Pagelets”

### Accordion Menu XSL Template

PeopleTools 8.54 includes a new Pagelet Wizard XSL template named Accordion Menu, which can be selected as custom XSL for navigation collection pagelets at step 5 in Pagelet Wizard.

## Conditional Navigation Enhancements

With the introduction of the PeopleSoft Fluid User Interface, PeopleTools 8.54 provides administrators the capability to render a page either in classic mode or fluid mode based on conditions specified for a content reference and based on factors that support viewing fluid pages. Additionally, you can direct a user to a different content reference, instead of the default content reference, also based on conditions and factors. Administrators can configure an alternate content reference by specifying conditions using a system attribute or multiple system attributes. While generating the default content reference, the conditions or system attributes for an alternate content reference, if specified, are evaluated at runtime to determine the content reference that should be displayed to a particular user. PeopleTools also provides a mechanism to override any conditional navigation configuration at the component level and within a specific code segment.



To support conditional navigation, some PeopleCode methods, properties, and built-in functions are now “conditional navigation aware,” which means that they will generate a URL or return a value that is dependent on the conditional navigation configuration.

Moreover, PeopleTools supports configuring conditional navigation on a multi-instance environment. When conditional navigation is configured, PeopleTools takes into account how SES search results, related content, and access to remote folders in unified navigation are handled.

### See Also

Product documentation for *PeopleTools 8.54: Portal Technology*, “Working with Conditional Navigation”

## Deprecated Features

As of PeopleTools 8.54, integration with Oracle WebCenter through the delivered related content services has been deprecated.

## PeopleSoft Documents Technology

This section describes enhancements and changes to PeopleSoft Documents Technology.

### Omitting the JSON Labels in Generated JSON

A property has been added to the Document Builder - JSON page inside the JSON Details section called Hide Parent Object Label. When this check box is selected the system-generated JSON does not include the JSON label (object name in the parent document).

This provides more flexibility to create a third-party JSON string. Note, that this option will be enabled if the PeopleSoft document was created using the Consume Web Service wizard in PeopleSoft Integration Broker.

### See Also

*PeopleTools 8.54: Documents Technology*, “Managing Formatted Documents,” Managing JSON-Formatted Documents, Omitting the JSON label in generated JSON.

### Document Builder – HTML Page

An HTML page has been added to the Document Builder. The page is reserved for future use and is not documented in this release.

## Application Engine

Application Engine features these enhancements:

### Application Engine Trace File Enhancements

PeopleTools 8.54 will include the following features to streamline Application Engine Trace files.

- Application Engine trace file split.  
You can set the file size of the Application Engine Trace file. Whenever the file size exceeds the defined file size value, the file will close and the log will shift to a new file.
- Application Engine trace file naming convention.  
The naming convention for the Application Engine Trace file with a process instance will include the Date/Time stamp.
- Application Engine program section trace.  
In previous versions, the trace file included output of the Application Engine program with all the sections. From this release you can select the sections to trace output in the Application Engine Trace file.
- Application Engine trace file with PeopleCode and SQL trace outputs.  
You can combine the trace output for both PeopleCode and SQL into Application Engine Trace file.

Also for 8.54, it will be optional to commit changes in the Application Engine program to the database. You can opt not to commit the changes for application engine program to the database, if the application engine program is running from Application Designer.

### Global Temporary Table in Application Engine

PeopleTools 8.54 extends the potential of Oracle Global Temporary Tables (GTTs) to Application Engine.

In 8.54, you can define Temporary Tables as GTTs in the Application Designer. This feature can be applied to Application Engine programs running in both batch mode and online mode. The data in GTT is session specific for Application Engine programs running in batch mode and transaction specific for Application Engine programs running in online mode. But GTTs in online mode cannot be shared between Application Engine programs. Each Application Engine program has its own set of GTTs. Therefore, it is recommended that GTTs should not be used as Share Tables in online mode. You can also define GTTs to re-startable batch Application Engine programs considering that the data in GTT will not be retained when the program exists.

Prior to 8.54, a warning was displayed whenever the number of instances of a temporary table exceeded 99. From 8.54, you can set the number of instances to a maximum of 9999 when the Application Engine program uses only GTTs in temporary tables. If the Application Engine program is using both GTTs and temporary then a warning is displayed when the number of instances exceeds 99.

Update statistics is not supported for Application Engine programs that use Oracle GTTs as temporary tables. Using this meta-SQL will have no effect on the result of Application Engine program.

### See Also

Product documentation for *PeopleTools 8.54: Application Engine*, "Using Temporary Tables"  
Understanding Global Temporary Tables

## Global Technology

PeopleTools 8.54 is adding four more pages to support translating definitions in target languages. The definitions added are:

- Composite Queries.
- MAP Layout.
- MAP Template.
- Data Set Definitions.

PeopleTools 8.54 introduces a faster method to convert Oracle databases to Unicode. Oracle Database Migration Assistant for Unicode (DMU) is a migration tool that provides a complete solution on Oracle databases to convert to Unicode. It also provides validation to identify any data that may have issues converting to Unicode.

### See Also

Product documentation for *PeopleTools 8.54: Global Technology*, "Converting PeopleSoft Systems to Unicode Databases," Converting to Unicode on Oracle Databases

# System Administration Tools Enhancements

This section discusses enhancements made to system administration tools in the following areas:

- Server Administration and Data Management.
- Security Administration.
- Automated Configuration Management.

## Server Administration and Data Management

This section discusses Server Administration and Data Management enhancements.

### Portable PS\_HOME

PeopleTools has focused on a number of enhancements related to PS\_HOME in recent PeopleTools releases to make PS\_HOME more secure, with a clearer separation of functionality. It began with providing a more secure installation by splitting out logs, cache and configuration files into PS\_CFG\_HOME, which allowed PS\_HOME to become read-only. From there, we created PS\_APP\_HOME to split the PeopleTools and PeopleSoft application objects apart, thus removing any ambiguity of which objects are changed during a PeopleTools vs. application upgrade, or during the application of maintenance. PS\_CUST\_HOME arrived with PeopleTools 8.53 and provided a mechanism to separate any customized code (COBOL, SQR, and so on) from delivered code.

With PeopleTools 8.54, the latest enhancement involving PS\_HOME, Portable PS\_HOME, will provide an easier way to use a private cloud configuration where multiple application installations use the same PeopleTools install. Hard-coded paths and symbolic links are removed, which will allow the install of PeopleTools to be more easily copied to other servers. UNIX file servers can create a mount point to use the installation with any number of environments. With a single PeopleTools install being used with multiple application installs, procuring an environment becomes faster and cheaper. In addition, when it is time to apply maintenance, it is quickly performed in one place instead of in each separate environment, thus lowering the total cost of ownership.

#### See Also

Product documentation for *PeopleTools 8.54: System and Server Administration*, “Working with Server Domain Configurations,” Managing a Portable PS\_HOME

### PSADMIN Symbolic Link Removed for Portable PS\_HOME (UNIX)

The symbolic link from PS\_HOME/appserv/psadmin to PS\_HOME/bin/psadmin will no longer be created at install. Any existing custom scripts in your implementation that invoke PS\_HOME/appserv/psadmin will need to be changed to invoke PS\_HOME/bin/psadmin or invoke psconfig.sh prior to invoking PSADMIN without a fully qualified path name.

## Changes to psconfig.sh for Portable PS\_HOME (UNIX)

Sourcing this script will continue to be necessary prior to using any PeopleTools functionality on UNIX. However, this file will no longer contain a hardcoded path to PS\_HOME, which means that the script will derive the location of PS\_HOME from the context in which it runs. As such, it is required that the current working directory is PS\_HOME prior to sourcing psconfig.sh.

## Changes to PS\_HOME\peopletools.properties for Portable PS\_HOME

The installlocation value, which in previous releases identifies the PS\_HOME variable, has been removed in PeopleTools 8.54 for the copy of the peopletools.properties file written to PS\_HOME during installation. However, the installlocation key will continue to appear in the peopletools.properties file that resides in PS\_CFG\_HOME. The system generates the value when creating the PS\_CFG\_HOME. As in:

```
installlocation=C:\\PT8.54
```

This presence of the installlocation value in PS\_CFG\_HOME\peopletools.properties enables the EMF Agent to discover the location of the appropriate PS\_HOME when crawling the environment, and it also associates the configuration home location with the appropriate PeopleTools install, from which it was created.

## ServerName Parameter Removed from PSADMIN Quick Configure Menu

For platforms that require the ServerName parameter to be set in order to boot, such as Sybase or Informix, you need to set that parameter through the custom configuration option in PSADMIN or by setting it manually in the configuration file. It no longer appears in the Quick Configure menu.

### See Also

Product documentation for *PeopleTools 8.54: System and Server Administration*, “Using the PSADMIN Utility,” Using the Quick-Configure Menu

## PeopleSoft Plug-in for Enterprise Manager 12c

Application Management Suite for PeopleSoft leverages Oracle Enterprise Manager as its technical foundation to enable the business driven approach of managing PeopleSoft. The PeopleSoft plug-in for Enterprise Manager 12c provides a set of PeopleSoft-specific tools, such as Domain Administration and Process Scheduler Management that are designed to address the unique management challenges of the PeopleSoft applications.

The PeopleSoft plug-in for Enterprise Manager 12c in PeopleTools 8.54 includes the following enhancements:

- Extended Diagnostics.

This feature extends the current logging with hints for normalizing local environments and custom configurations.

- Ease of discovery and configuring the Process Monitor target.

The Process Monitor target is a useful feature of the PeopleSoft plug-in, providing deeper insight to batch processing. This feature will aid in configuring the PROCESSREQUEST web service for greater ease of discovery of the Process Monitor target.

- Extending use of delivered Enterprise Manager user-interface framework.

The PeopleSoft plug-in takes advantage of delivered core Enterprise Manager framework. The Enterprise Manager core team has enhanced the user-interface framework, and in this release. PeopleTools has incorporated those changes into the plug-in pages.

## Global Temporary Tables

Global Temporary Tables (GTTs) are Oracle database working tables whose data persists for the span of a specific process. Multiple processes are able to use these work tables without any data collision among processes because the data is process-specific and operations on the data in one session will not affect the data in use by any other process. GTTs improve performance by automatically discarding data at the end of a session. GTTs are not logged by design, and they will not incur any logging overhead.

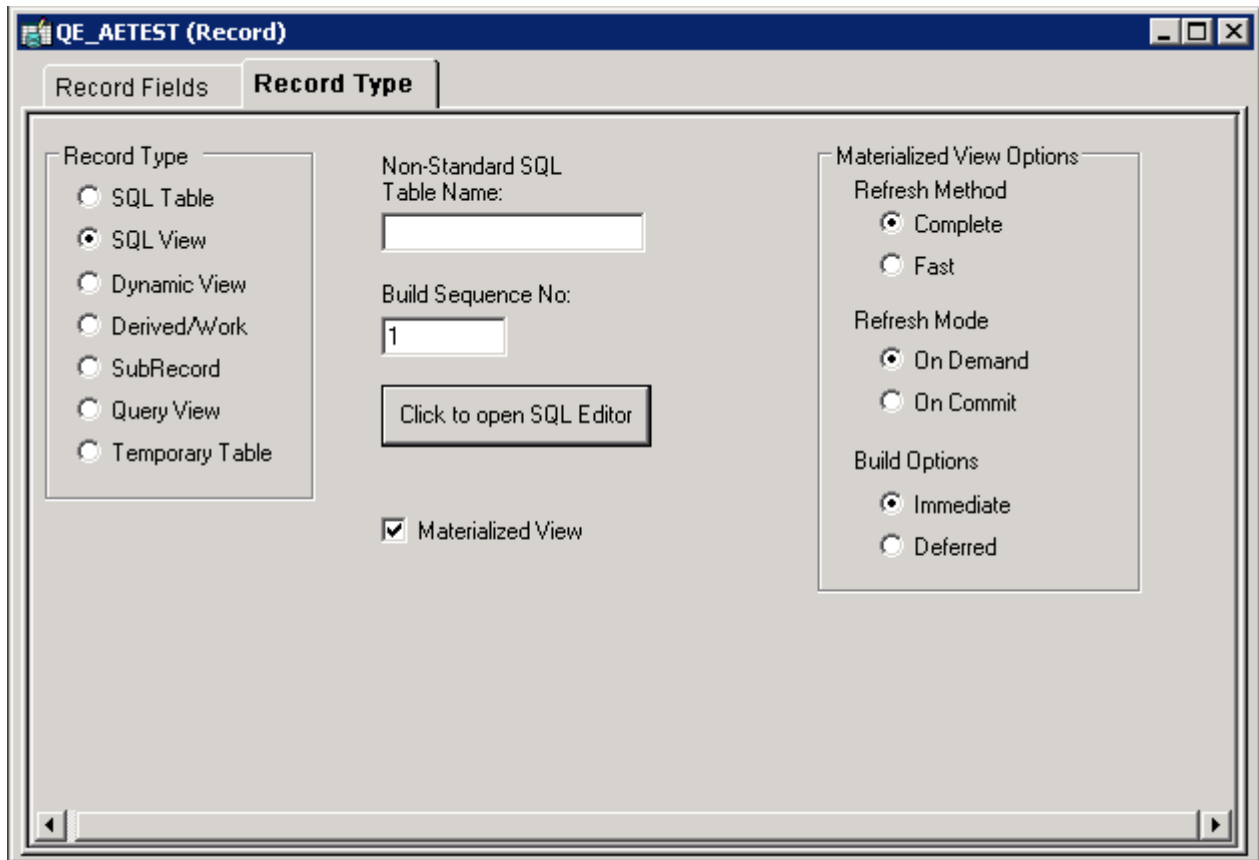
### See Also

Product documentation for *PeopleTools 8.54: Application Engine*

## Oracle Materialized Views

Materialized views take the results of complex SELECT statements and save the datasets to disk. The results are then readily available without the need to run the SQL each time. The SELECT statements typically defining materialized views often contain sizable tables, complex joins, and summary functions that may take some time and computing resources to complete. By running the SQL once and saving the results to be used and reused, a significant savings of CPU and memory consumption can be achieved. Materialized views provide significant improvements in performance when used in Pivot Grids that do not use frequently updated data sets. The data is refreshed on a time period defined in the materialized view.

PeopleTools 8.54 enables potentially significant CPU savings by using materialized views for the Oracle database. Application Designer will have the ability to declare and define materialized views (including the data refresh period) for use within PeopleSoft applications.



### Defining Materialized View Options in Application Designer

In addition, the new Materialized View Maintenance page is provided in PeopleSoft Internet Architecture. Administrators can use this page to review the status of materialized views and refresh selected records.

#### See Also

Product documentation for *PeopleTools 8.54: Data Management*, “Administering PeopleSoft Databases on Oracle,” “Using Materialized Views”

## Multitenant Database Support

Multitenant Database is a new feature included in Oracle database 12c that provides the ability to move previously autonomous databases (such as PeopleSoft application databases) into a single container database instance. Each database that is plugged into a container still appears to be unique; however, several advantages are gained, including:

- The pluggable databases in a container database share a common catalog and background processes, which reduce the CPU and memory footprints.
- Database patching is performed once at the container database level and used by all pluggable databases, which greatly simplifies maintenance.



- Managing databases is significantly improved because one container database is much easier to manage than all of the independent pluggable databases. Backups and disaster recovery are performed at the container level instead of each pluggable database being managed independently.
- Provisioning, cloning, or both are greatly improved. Databases can be cloned in seconds.

With PeopleTools 8.54, container databases and pluggable databases can be configured during installation, thus eliminating the manual steps previously required to create a Multitenant Database environment.

### See Also

Product Documentation for *PeopleTools 8.54: Data Management*, “Administering PeopleSoft Databases on Oracle,” “Using Pluggable Databases”

## Partitioning for Oracle Database

In PeopleTools 8.51, PeopleTools began saving the partitioning configuration that customers would implement in a PeopleSoft database. Before this, customers would need to reapply their partitioning settings each time they performed a PeopleTools upgrade. While that was helpful to some extent, PeopleTools 8.54 really completes the enhancement.

With PeopleTools 8.54, Oracle database customers are able to configure partitioning of PeopleSoft tables as well as indexes. These configurations no longer need to be done outside of PeopleSoft.

To establish partitioning definitions, a new Partitioning page is provided in PeopleSoft Internet Architecture. On this page you can review delivered PeopleSoft partition definitions, or specify table and index partitioning parameters, generate the partitioning DDL and save the DDL to the PeopleTools metadata tables.

**Partitioning**

Record Name

**Table Partitioning**

Partitioning Type   No of Hash Partitions

**Table Partitioning Attributes** Personalize | Find | | First 1 of 1 Last

Partition No	Key Field	Tablespace Name		
1	<input type="text" value="SEQNUM"/>		<input type="button" value="+"/>	<input type="button" value="-"/>

**Table Partitioning DDL**

```
PARTITION BY HASH (SEQNUM)
PARTITIONS 5 TABLESPACE
```

**Index Partitioning**

Index Type   Index Name

**Index Partitioning DDL**

```
CREATE INDEX DEPT_ACCESSIDX ON PS_DEPT_ACCESS_TBL
(*) LOCAL TABLESPACE
```

Partitioning Page

To maintain and apply partition definitions in Application Designer, use the new Maintain Partitioning DDL dialog box. This dialog box enables you to apply partitioning and to build (alter) the record.

**Maintain Partitioning DDL**

Retrieve Partitioning DDL  
PSFT Delivered

Table Partitioning DDL

```
PARTITION BY RANGE (QE_BEGIN_DT)
{
PARTITION TEST1 VALUES LESS THAN (TO_DATE('1987-07-14','DD-MON-YYYY')) TABLESPACE PSIMAGE,
PARTITION TEST2 VALUES LESS THAN (TO_DATE('1986-06-06','DD-MON-YYYY')) TABLESPACE PSIMAGE,
PARTITION PE_MAXVALUE VALUES LESS THAN (MAXVALUE) TABLESPACE PSIMAGE
}
PCTFREE 20 ENABLE ROW MOVEMENT
```

Index Partitioning DDL

Apply Partitioning

Reset Save OK Cancel

### Maintain Partitioning DDL Dialog

#### See Also

Product documentation for *PeopleTools 8.54: Data Management*, “Administering PeopleSoft Databases on Oracle,” “Maintaining Partition Definitions”

## Removing Support for Descending Indexes on Oracle

With PeopleTools 8.54, PeopleTools will no longer support descending indexes on the Oracle database platform.

## Monitoring and Adjusting Domain Cache during Runtime

Several new settings are available in PSADMIN that enable the system to monitor and adjust automatically a domain's cache while it runs, requiring no intervention from system administrators, and without requiring the domain or a server process to be restarted. These new settings enable you to have the system monitor and adjust for various scenarios, such as:

- Incrementally increase the maximum memory cache limit (MaxCacheMemory) if it is determined to be too low.
- Monitor the percentage of objects that are pruned from memory cache and adjust the maximum memory cache limit if the percentage is determined to be too high.
- Monitor for invalid objects in cache and remove them, forcing the object to be refreshed from the database.

### See Also

Product documentation for *PeopleTools 8.54: System and Server Administration*, "Setting Application Server Domain Parameters," Cache Settings, Enable Cache Repair

## Recycling Server Processes Based on Server Process Memory Size

The Percentage Memory Growth parameter has been removed for PeopleTools 8.54 and replaced with a new approach to recycling server processes.

Enter a memory threshold for recyclable server processes running within the domain. When the server processes exceed the limit, the system restarts, or recycles, them. This setting applies to all recyclable server processes within the domain.

Recyclable server processes include:

- PSAPPSRV
- PSANALYTICSRV
- PSSAMSRV
- PSQCKSRV
- PSQRYSRV
- Integration Broker server processes

This parameter can be set for an entire domain, for individual server processes, or at the server process group level (for the Integration Broker server processes).

### See Also

Product documentation for *PeopleTools 8.54: System and Server Administration*, "Setting Application Server Domain Parameters," Domain Settings, ProcessRestartMemoryLimit

## Push Notification Event Framework

This section describes features of the Push Notification framework, including Push Notifications and Notification Window.

### Push Notification

Push Notification is an event framework that enables PeopleSoft server run time to push data directly to PeopleSoft Pure Internet Architecture browsers. This allows bidirectional full duplex communication between browser clients and server runtime. The feature allows defining individual events or group-related events as collections and provides an API to dispatch events to browser clients.

A PIA browser page subscribes to the events through one of the following ways.

- IWC. (Inter Window Communication)
- Custom JavaScript subscription.

The published event data is passed to the browser page in the form of a JSON (JavaScript object notation) object. The configuration of web servers and reverse proxies must support WebSocket technology to enable this feature.

The system requirements for WebSocket support are:

- **Web Server:** WebLogic 12.1.2 onwards which is not supported at present on WebSphere.
- **Reverse Proxy Support:** OTD from 11.1.1.7, WLS Plug-In 12.1.2+ for Apache 2.2, 2.4

### Notification Window

Notification Window uses the push mechanism provided by Push Notification and collates various notifications generated by the system to the window. It categorizes notifications into actions and alerts and allows actions to be performed on the notification items. Approval Workflow Engine (AWE) and Trigger Business Event (TBE) are some of the functional areas that will have their notifications published to the Notification Window.

#### See Also

Product documentation for *PeopleTools 8.54: System and Server Administration*, "Working with Push Notification Framework"

## Changing the Default Style Sheet

In previous releases, to change the default style sheet for a database, you made various selection on the PeopleTools Options page, the Registry Options page, the System Options page, and then you ran an Application Engine program, UPGPT850SWAN. With PeopleTools 8.54, this process has been streamlined. Now, you select the default style sheet for classic and fluid interfaces using the Branding System Options page.

#### See Also

Product documentation for *PeopleTools 8.54: Portal Technology*, "Using PeopleTools Branding Features," Administering System Branding

## Preloading Memory Cache during Domain Boot

In PeopleTools 8.54, you can preload memory cache during domain boot (serial or parallel) processing and recycling the process.

When you boot a domain in serial mode, a message warns the user of a possible delay in booting the domain and lists the project that is being loaded, but when you boot a domain in parallel mode, the message is not displayed. If a project does not load completely, an administrator can adjust the boot timeout setting.

Logs pertaining to preloading memory cache are logged in the application server log file. In the application server configuration file, the log fence setting must be set to 5 to view the preload memory cache logs.

## Security Administration

This section describes changes and enhancements in the area of Security Administration, including:

- Extending the Secure by Default initiative.
- Security authorization service.
- PIA-based Definition Security.
- Enhanced login audits.
- LDAP connection parameters.
- Kerberos documentation removed.

### Extending Secure by Default Initiative

In line with an overall [Oracle Secure Configuration Initiative](#), PeopleTools 8.54 continues to expand on its Secure by Default installation. Secure by Default is an approach to ensure that the application configuration settings adhere to system hardening recommendations. This section describes enhancements delivered this release.

### Extended Support for Digital Signatures

The PeopleTools security framework includes a new External Digital Certificates page to support a BI Publisher for PeopleSoft enhancement for creating digital signatures for PDF report output. The digital signature verifies the signer's identity and ensures that the report output has not been altered. Digital signatures can be attached to all PDF output and is enabled for both PDF and RTF templates.

Note. As of the PeopleTools 8.54 release you can apply digital signatures to BI Publisher for PeopleSoft PDF output only.

### See Also

[BI Publisher for PeopleSoft](#) section in this document.

Production documentation for *PeopleTools 8.54: Security Administration*, "Applying Digital Signatures to PDF Report Output"

### Security Authorization Service

PeopleTools has extended the Security Authorization Service functionality to configure row-level security to multiple content types. In PeopleTools 8.54, row-level security is extended to iScript, PeopleSoft Query, application classes and pagelets that were previously restricted to component and content references only. To authorize services, you can associate a security application class to multiple content types on a single page. This will ease the maintenance and audit activities to configure authorizations when you are reusing a security application class.

PeopleTools 8.54 will also authorize you to set attributes on Related Content services. You will be able to enable and disable any action, add or update mouse-over text and update action service labels when you are logged in as a user.

### See

Product documentation for *PeopleTools 8.54: Security Administration*, “Using Web Services for Object and Row-Level Data Authorization,” Configuring Content Types to Use the Security Authorization Service

## PIA-Based Definition Security

PeopleTools has been delivering a two-tier Definition Security application for securing PeopleTools managed objects, such as components, menus, pages, records, fields, and so on.

Beginning this release PeopleTools is also delivering this functionality in the PeopleSoft Pure Internet Architecture.

Like two-tier Definition Security, PIA-based Definition Security enables you to create, copy, and delete definition groups, as well as grant permission list access to definition groups.

However, PIA-based Definition Security provides additional functionality that is not available in the two-tier application. Specifically, the ability to:

- Create inclusion rules so that new objects added to the database and that meet an inclusion rule are added to a definition group.
- Define row-level security by definition type.
- Enable or disable Secure by Default for all objects covered by Definition Security.
- View unsecured definitions/definitions that don't belong to a group.

Note that the two-tier Definition Security application will continue to be delivered and you can continue to access it using PeopleSoft Application Designer or the PSOSE executable file.

### See Also

Product documentation for *PeopleTools 8.54: Security Administration*, Implementing Definition Security (Three-Tier)



## Enhanced Login Audits

For every PIA sign on attempt, there will be two rows:

- Information about the last successful login, including timestamp and authentication type.
- Information about the last failed attempt, including timestamp, failed logic count and authentication type.

The information is logged in and can be queried from the PSPTLOGINAUDIT table. Enhanced login audits are enabled in the application server configuration file.

Note that the access log queries generated by the PSACCESSLOG table, Access Activity by User, Access Activity by Day, and Active User List, continue to be delivered.

### See Also

Product documentation for *PeopleTools 8.54: Security Administration*, Administering User Profiles, Tracking User Sign-In Attempts

## LDAP Connection Parameters

The LDAP section of the psappsrv.cfg file has been modified to include several parameters to configure the connection between the PeopleSoft application server and an LDAP directory server. The new parameters include:

- *Enable Referrals*. Enable/disable referrals being followed in the configured directory server.
- *Connection Time Limit*. Set the maximum time limit to connect to the LDAP directory server.
- *Enable Connection Pooling*. Enable/disable connection pooling.
- *Connection Pooling Time*. Set the maximum time limit to hold connections in the connection pool.
- *LDAP LogFence*. Control LDAP-related logging.

### See Also

Product documentation for *PeopleTools 8.54: Security Administration*, “Employing LDAP Directory Services,” Configuring LDAP Connection Parameters

## Kerberos Documentation Removed

Previous releases of the Security Administration documentation described how to implement Kerberos as a desktop single-signon solution.

The information described was a proof of concept, and the solution is not a supported or certified implementation. As a result, documentation related to Kerberos has been removed from the PeopleTools documentation set.

## Automated Configuration Management

Prior to 8.54, PeopleTools products/components configuration required time consuming, error-prone, manual tasks. In 8.54, PeopleTools introduces a new framework with a set of plug-ins grouped in a template that enables you to perform products/components configuration using PIA or command line. Moreover, the framework provides a configuration monitor that accurately displays the erroneous parameters. PeopleTools delivers more than a dozen plug-ins including Integration Broker, Oracle Secure Enterprise Search, Unified Navigation, and PeopleSoft Test Framework. In addition, users can develop their own plug-ins.

### See Also

Product documentation for *PeopleTools 8.54: Automated Configuration Management*

# Reporting and Analytic Tools Enhancements

This section covers changes made to the PeopleSoft reporting and analytic tools, including:

- PeopleSoft Pivot Grid.
- BI Publisher for PeopleSoft.
- PeopleSoft Query.
- nVision.
- Process Scheduler.
- Reporting Web Services.
- Tree Manager.
- PeopleSoft SQR.

## PeopleSoft Pivot Grids

Since their release a few years ago, Pivot Grids have become a valuable component of PeopleSoft's rich reporting and analytics toolset. With PeopleTools 8.54, our teams continue to enhance this important technology to become an integral element of the PeopleSoft user experience.

As mentioned, the PeopleSoft Fluid User Interface takes advantage of Pivot Grids both on the new fluid homepage tiles as well as the basis for the new component search framework used for fluid components. These new capabilities ensure that visual insight and analytics are woven directly into the fabric of the PeopleSoft application, rather than merely graphics pasted onto a page.

PeopleTools 8.54 brings a number of extremely important new features to PeopleSoft Pivot Grid:

- Setting the limit of the Pivot Grid result rows.
- Viewing PSQuery drilling URLs in Pivot Grid Detail View.
- Scatter and Bubble chart types.
- Attaching PeopleSoft Trees to dimensions.
- Setting Column Type value.
- Setting Aggregate value.
- Setting currency formats.
- Setting the Display As option.
- Setting embedded help.
- Specifying the display mode.

- Specifying the fluid mode options.
- Expanding or collapsing all dimensions in the grid.
- Configuring Pivot Grid Views using Pivot Grid Wizard.
- Publishing Pivot Grid fluid views as grouplets.
- Creating Pivot Grid models directly from Query Manager.
- Setting row-level, aggregate, and bulk related actions.
- Displaying all views in the Pivot Grid Viewer search page.
- Resetting layouts.
- Drilling down to details from the charts.
- Using Component Real Time Search in Pivot Grid fluid mode.
- Creating component Pivot Grid models using Pivot Grid Wizard.
- Viewing Pivot Grid models in fluid mode.
- Using the Component Real-Time Search and viewing Pivot Grid models in mobile interaction platforms.
- Embedding Pivot Grid fluid subpages in application pages.
- Copying the fluid components between databases.
- Preserving Pivot Grid configuration and personalizations.

## Setting the Limit of the Pivot Grid Result Rows

You use the Max Rows in Pivot Grids field in the PeopleTools options page to set the number of rows returned in detail or list view in search (that is obtained by executing the query).

The default setting is 100. This setting applies for component real time search view, Fluid Mode view, and Pivot Grid Detail View in classic viewer.

### See Also

Product documentation for *PeopleTools 8.54: Pivot Grid*, "Understanding PeopleSoft Pivot Grid,"  
Setting the Limit of the Pivot Grid Result Rows

## Viewing PSQuery Drilling URLs in Pivot Grid Detail View

PSQuery supports drilling URLs that enable you to navigate to either a PeopleSoft Pure Internet Architecture page, another query result page, or an external page. These drilling URLs can contain context-sensitive bind values obtained from the query result row. For example, a drilling URL enables you to navigate to a component by taking key values from the row where you click a cell.

You use PeopleSoft Query - Query Manager to define drilling URLs. When a Pivot Grid model uses a query as the data source, and that query is defined to include the drilling URLs in the query results, Pivot Grid Detail View displays the drilling URL results.

### See Also

Product documentation for *PeopleTools 8.54: Pivot Grid*, "Using PSQuery as a Data Source for Pivot Grid," Pivot Grid Model Overview, Using Query Drilling URLs in the Pivot Grid Model

## Scatter and Bubble Chart Types

The Scatter and Bubble chart types are available for the Chart Only models. These chart types apply for the classic Pivot Grid Viewer, Pivot Grid Fluid Viewer, and search pages. You can select the chart types at the model level or at the view level. In addition, end users can set this chart type using the chart options.

### See Also

Product documentation for *PeopleTools 8.54: Pivot Grid*, "Using PSQuery as a Data Source for Pivot Grid," Example: Using PSQuery as a Data Source for Pivot Grid, User Actions Listener When the Display Option is Chart Only, Displaying a Chart in Scatter or Bubble Chart Type

## Attaching PeopleSoft Trees to Dimensions

Each dimension in the Pivot Grid model can be associated with a PeopleSoft Summer Tree (which has the tree details associated with a component). The totals that appear in the Pivot Grid are limited to only the lowest level of the tree structure.

### See Also

Product documentation for *PeopleTools 8.54: Pivot Grid*, "Using Pivot Grid Wizard," Creating a PSQuery Pivot Grid Model Using the Pivot Grid Wizard, Specifying Data Model Values, Tree Options

Product documentation for *PeopleTools 8.54: Pivot Grid*, "Using Pivot Grid Wizard," Creating a PSQuery Pivot Grid Model Using the Pivot Grid Wizard, Specifying Data Model Values, Attaching PeopleSoft Trees to Dimensions

## Setting Column Type Value

Beginning from PeopleTools 8.54, if expression is used in the Pivot Grid model, then:

- The formula-based expression can be used only as a column value and no aggregate function should be applied if the aggregation functions are derived from the other columns that make up the expression. You can select the *None* option in the Aggregate column for the expression to avoid multiple aggregation on the column.
- The formula-based expression cannot be used as a column axis.
- The formula-based expression should be comprised of only other column values.

### See Also

Product documentation for *PeopleTools 8.54: Pivot Grid*, "Using Pivot Grid Wizard," Creating a PSQuery Pivot Grid Model Using the Pivot Grid Wizard, Specifying Data Model Values

## Setting Aggregate Value

Beginning from PeopleTools 8.54, if the PSQuery expression is based on a formula and that expression is used in the Pivot Grid model, then the type of the column should be set to *Value*, and the Aggregate value should be set to *None* to avoid multiple aggregations on the column.

### See Also

Product documentation for *PeopleTools 8.54: Pivot Grid*, "Using Pivot Grid Wizard," Creating a PSQuery Pivot Grid Model Using the Pivot Grid Wizard, Specifying Data Model Values

## Setting Currency Formats

You can use the Specify Data Model Values page - Formatting Options section to set the currency controls, currency symbols, and one-thousand separators.

### See Also

Product documentation for *PeopleTools 8.54: Pivot Grid*, "Using Pivot Grid Wizard," Creating a PSQuery Pivot Grid Model Using the Pivot Grid Wizard, Specifying Data Model Values, Formatting Options

## Setting the Display As Option

You can select either the Percentage or the Percentage Grand Total option to display the number (fact) values in the grid and chart.

### See Also

Product documentation for *PeopleTools 8.54: Pivot Grid*, "Using Pivot Grid Wizard," Creating a PSQuery Pivot Grid Model Using the Pivot Grid Wizard, Specifying Data Model Options, View Options

## Setting Embedded Help

In the Specify Data Model Options page – Display Options section, if the Show Help option is selected:

- The Help Message section appears and you are able to define the help information.
- The embedded Help icon is available in the Grid Viewer page.  
Note that the Help icon is shown only in the classic viewer and it is unavailable in the fluid viewer.

### See Also

Product documentation for *PeopleTools 8.54: Pivot Grid*, "Using Pivot Grid Wizard," Creating a PSQuery Pivot Grid Model Using the Pivot Grid Wizard, Specifying Data Model Options, Display Options

## Specifying the Display Mode

Use the Display Mode section in the Specify Data Model Options page to specify a display mode at the view level for PSQuery Pivot Grid models. The selected option in this section can override the viewer that is used for opening the Pivot Grid view.

### See Also

Product documentation for *PeopleTools 8.54: Pivot Grid*, "Using Pivot Grid Wizard," Creating a PSQuery Pivot Grid Model Using the Pivot Grid Wizard, Specifying Data Model Options, Display Mode

## Specifying the Fluid Mode Options

Use the Fluid Mode Options section in the Specify Data Model Options page to specify how to display the view of the Pivot Grid models in the Fluid mode.

### See Also

Product documentation for *PeopleTools 8.54: Pivot Grid*, "Using Pivot Grid Wizard," Creating a PSQuery Pivot Grid Model Using the Pivot Grid Wizard, Specifying Data Model Options, Fluid Mode Options

## Expanding or Collapsing All Dimensions in the Grid

When the Pivot Grid model contains dimensions with totals on the lowest level of the grid row or column, the Expand All and Collapse All links appear in the grid title region on the Pivot Grid Display page.

You use the Expand All link to expand all the dimensions in the row and column positions for totals. You can also use the Collapse All link to collapse any expanded positions in the grid row or column for totals.

### See Also

Product documentation for *PeopleTools 8.54: Pivot Grid*, "Using Pivot Grid Wizard," Creating a PSQuery Pivot Grid Model Using the Pivot Grid Wizard, Viewing Pivot Grid Displays

Product documentation for *PeopleTools 8.54: Pivot Grid*, "Using Pivot Grid Viewer," Viewing a Pivot Grid Model Using the Pivot Grid Viewer

## Configuring Pivot Grid Views Using Pivot Grid Wizard

From the Pivot Grid Display page in Pivot Grid Wizard, you can use the Configure Pivot Grid View link to access the Pivot Grid Views Component, where you can create or edit views that are associated with the Pivot Grid model.

### See Also

Product documentation for *PeopleTools 8.54: Pivot Grid*, "Using Pivot Grid Wizard," Creating a PSQuery Pivot Grid Model Using the Pivot Grid Wizard, Viewing Pivot Grid Displays

## Publishing Pivot Grid Fluid Views as Grouplets

Application developer can use the Publish as Grouplet link in Pivot Grid Wizard to create the grouplets that are used in the Fluid mode. These grouplets are configured to point to the Fluid Viewer component for the specific Pivot Grid model.

### See Also

Product documentation for *PeopleTools 8.54: Pivot Grid*, "Using Pivot Grid Wizard," Creating a PSQuery Pivot Grid Model Using the Pivot Grid Wizard, Viewing Pivot Grid Displays

Product documentation for *PeopleTools 8.54: Pivot Grid*, "Using Component Real-Time Search and Pivot Grid Fluid Mode," Publishing Pivot Grid Fluid Views as Grouplets

## Creating Pivot Grid Models Directly from Query Manager

From the Query Manager component, the Pivot Grid designer, application developers, or report administrators can use the Publish as Pivot Grid link to access the Review Pivot Grids page.

From the Review Pivot Grid page, they can click either the Edit or the Add button to access the Pivot Grid Wizard – Select Data Source page, where they can add new Pivot Grid models or update existing ones that use the current query as the data source.

### See Also

Product documentation for *PeopleTools 8.54: Pivot Grid*, "Using Pivot Grid Wizard," Creating a Pivot Grid Model Using Query Manager

## Setting Row-Level, Aggregate, and Bulk Related Actions

In the Fluid Viewer, you can set the row-level related action for the Pivot Grid model that has the Detail View set to Grid and List. Each row of data in the Detail View has an Actions option to perform the row-level action. The grid or list view has multiple Select options, and the Actions button is used to perform the bulk related action for the selected rows. Clicking the chart data point or the fact in a grid populates the aggregate-related actions.

The functionality for these related actions is similar to that in the classic Pivot Grid Viewer.

### See Also

Product documentation for *PeopleTools 8.54: Pivot Grid*, "Using Pivot Grid Wizard," Using and Configuring the Related Actions Menu, Using Bulk Related Actions in Pivot Grid Detail View

Product documentation for *PeopleTools 8.54: Pivot Grid*, "Using Component Real-Time Search and Pivot Grid Fluid Mode," Row-Level, Aggregate, and Bulk Related Actions



## Displaying All Views in Pivot Grid Viewer Search Page

When you search for existing Pivot Grid models using the Pivot Grid Viewer search page, you can select the Show All Views option to display the default and non-default views that are associated with the Pivot Grid model.

### See Also

Product documentation for *PeopleTools 8.54: Pivot Grid*, "Using Pivot Grid Viewer," Viewing a Pivot Grid Model Using the Pivot Grid Viewer

## Resetting Layouts

If the personalization views are available for the current model, you are able to use the Reset option from the Option Menu icon in the Pivot Grid Viewer page to clear all the personalizations and to reset the Pivot Grid model to the default setting (without personalization).

### See Also

Product documentation for *PeopleTools 8.54: Pivot Grid*, "Using Pivot Grid Viewer," Viewing a Pivot Grid Model Using the Pivot Grid Viewer

## Drilling Down to Details from Charts in the Grid and Chart Views

In a *Grid and Chart* view, selecting a chart data point displays the detail view for the data point. If aggregate action is configured for the Pivot Grid model, selecting a chart data point also enables you to perform aggregate related actions.

### See Also

Product documentation for *PeopleTools 8.54: Pivot Grid*, "Using Pivot Grid Viewer," Viewing a Pivot Grid Model Using the Pivot Grid Viewer

## Using Component Real-Time Search and Pivot Grids in Fluid Mode

Fluid components should have the real-time search configured using Pivot Grid. To configure, application developer can use Pivot Grid Wizard to define Pivot Grid models by selecting component data source. The wizard creates a query behind the scenes with the same name of the component and associates it with the model. This query is based only on the search record of the component. The keys of the search record become the prompts for the model.

### See Also

Product documentation for *PeopleTools 8.54: Pivot Grid*, "Using Component Real-Time Search and Pivot Grid Fluid Mode"

## Creating Component Pivot Grid Models Using Pivot Grid Wizard

In the previous releases, you were able to create Pivot Grid models using Pivot Grid Wizard and set PSQuery as the data source. Beginning from PeopleTools release 8.54, you are able to create Pivot Grid models using Pivot Grid Wizard and set PSQuery or Component as the data source.

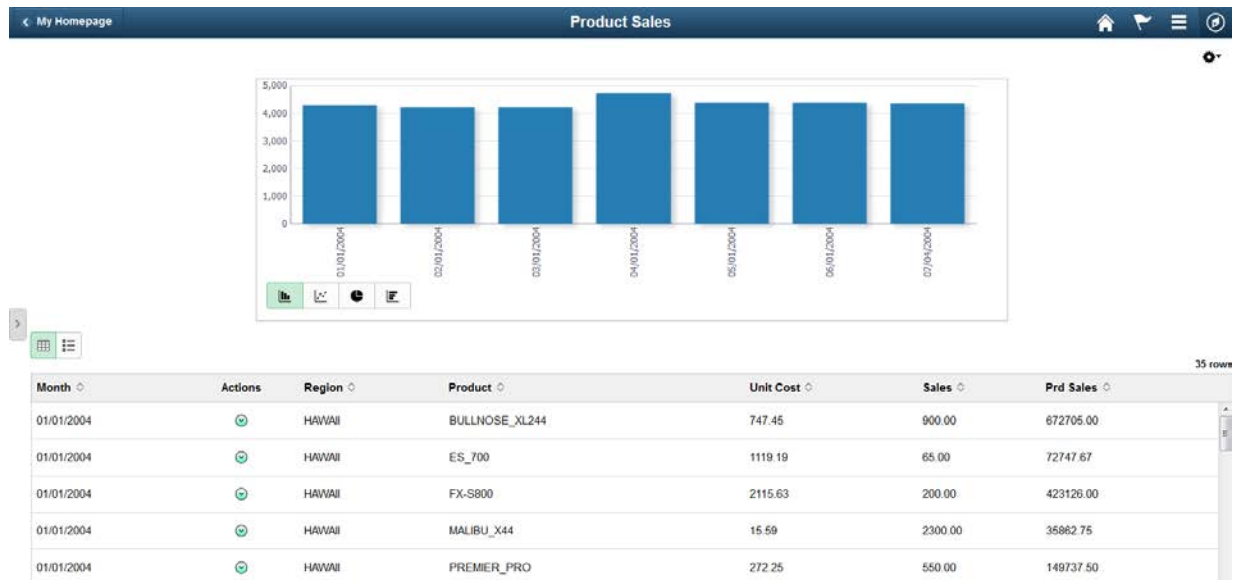
### See Also

Product documentation for *PeopleTools 8.54: Pivot Grid*, "Using Component Real-Time Search and Pivot Grid Fluid Mode," Creating Component Pivot Grid Models Using Pivot Grid Wizard

## Viewing Pivot Grid Models in Fluid Mode

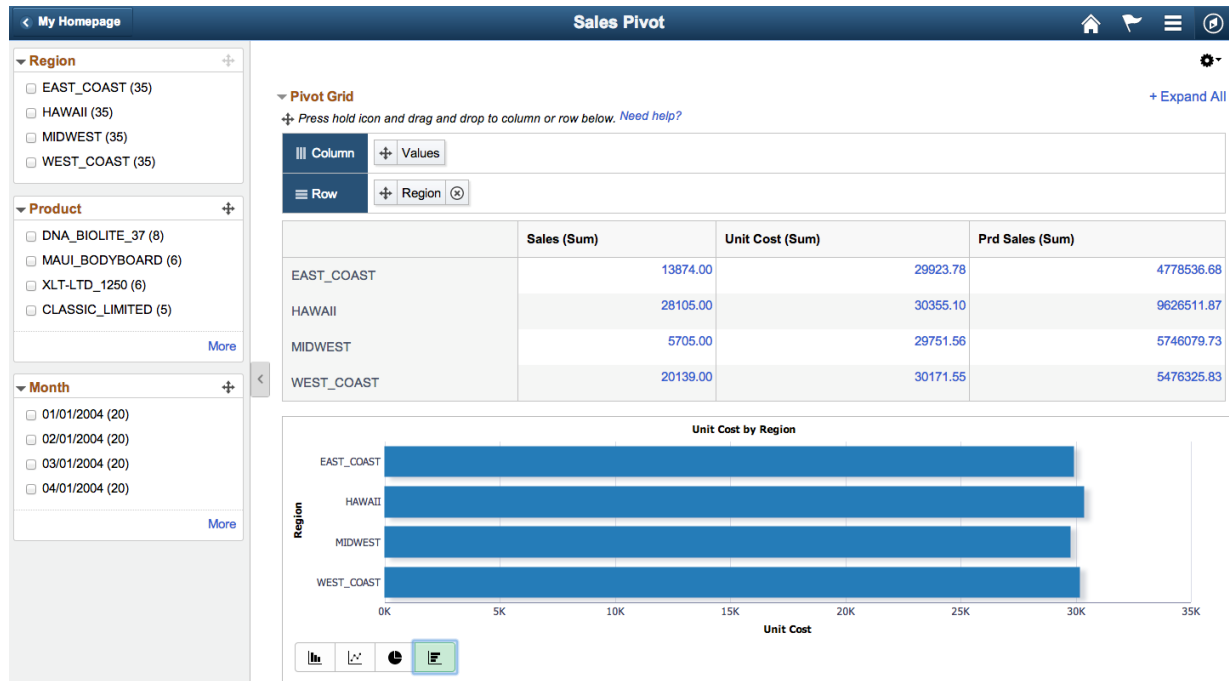
Pivot Grid Fluid mode, or Pivot Grid Fluid Viewer, represents the Pivot Grid models in a touch friendly and responsive user interface. All Pivot Grid models, including the existing Pivot Grid models created in an earlier release and the newly-created models, can be represented in the Fluid Viewer component.

This example shows the grid and detailed view for a Pivot Grid model. You can perform drilldown to details from the chart, change the axis level, drag axis between column and row regions, drag filters to rows or columns, expand or collapse nodes in the grid, and so on.



### Pivot Grid and Chart Model in Fluid Mode – Chart and Detailed View

This example shows the grid, chart, and facets for a Pivot Grid model.



Pivot Grid and Chart Model in Fluid Mode – Grid, Chart, and Facets

**See Also**

Product documentation for *PeopleTools 8.54: Pivot Grid*, "Using Component Real-Time Search and Pivot Grid Fluid Mode," Viewing Pivot Grid Models in Fluid Mode

**Using the Fluid Component Real-Time Search and Viewing the Fluid Pivot Grid Models in Mobile Interaction Platforms**

You can use mobile interaction platforms (for example, smart phones, iPad, and so on) to view Pivot Grid models and apply the functionality of Component Real-Time Search (CRTS).

**See Also**

Product documentation for *PeopleTools 8.54: Pivot Grid*, "Using Component Real-Time Search and Pivot Grid Fluid Mode," Using the Component Real-Time Search and Pivot Grid in Smart Phones

**Embedding Pivot Grid Fluid Subpages in Application Pages**

Application developers can embed multiple Pivot Grid fluid subpages inside any application Fluid page to display different views of the Pivot Grid model.

**See Also**

Product documentation for *PeopleTools 8.54: Pivot Grid*, "Using Component Real-Time Search and Pivot Grid Fluid Mode," Embedding Pivot Grid Fluid Subpages in Application Pages

## Copying the Fluid Components between Databases

You can copy the fluid components between databases. The only restriction is that within a database you cannot clone a model created out of component data source.

### See Also

Product documentation for *PeopleTools 8.54: Pivot Grid*, "Pivot Grid Administration," Copying Pivot Grid Model, Copying the Fluid Component between Databases

## Preserving Pivot Grid Configuration and Personalizations

Using the delivered PIA interface, customers can perform configuration actions on specific PIA-based objects, such as Related Actions, Activity Guides, Pivot Grids, Work Centers, and so on.

In the subsequent application upgrades, when fixes are delivered on these PIA-based objects, all configurations are identified and preserved on the customer environment if they uptake the fixes using PeopleSoft Update Manager (PUM).

Pivot Grid uses the ADS Framework, interfaces, the compare process, and the copy process to:

- Define intra-object and inter-object relationships.
- Define Pivot Grid configurations.
- Preserve the Pivot Grid customized configurations and personalizations.

### See Also

Product documentation for *PeopleTools 8.54: Pivot Grid*, "Preserving Pivot Grid Configuration and Personalizations,"

## BI Publisher for PeopleSoft

PeopleTools 8.54 extends the capabilities of BI Publisher to include a number of important enhancements, including:

- Support for Postscript and PCL printing for PDF output.
- Support for digital signatures on PDF output.
- Support for updating PDF output.
- Support for rich text handling in BI Publisher reports.

### Support for Postscript and PCL Printing for PDF Output

In PeopleTools 8.54, BI Publisher supports embedding of Printer Control Language (PCL) code in RTF templates to enable printing PDF with Secure Fonts™. PCL printing for PDF output is used for printing checks securely. Additionally, BI Publisher supports direct printing of PDF on PostScript (PS) compatible printers.

#### See Also

Product documentation for *PeopleTools 8.54: BI Publisher for PeopleSoft*, "Running, Locating, and Viewing BI Publisher Reports," Running Reports in Process Scheduler, Printing PDF Reports in PCL and PS Formats

### Support for Digital Signatures on PDF Output

BI Publisher reports output as PDF can now be digitally signed which verifies the signer's identity and ensures that the document has not been altered after it was created. Digital signatures can be attached to all PDF output and is enabled for both PDF and RTF templates.

#### See Also

Product documentation for *PeopleTools 8.54: BI Publisher for PeopleSoft*, "Attaching Digital Signature to PDF Reports"

### Support for Updating PDF Output

PeopleTools 8.54 adds the ability for BI Publisher PDF output to be updated by users and for the updated content to be submitted to PeopleSoft automatically. With this feature, a user can update information on a report or form and click an embedded Submit button to send the updated data back to the PeopleSoft database. The updatable PDF feature is perhaps most commonly used with government-delivered PDF templates. It works in both HTTP and HTTPS protocols. The updatable PDF feature is supported only for reports that use a PDF template.

#### See Also

Product documentation for *PeopleTools 8.54: BI Publisher for PeopleSoft*, "Creating Report Templates," Using PDF Templates, Creating Updatable PDF Report

## Support for Rich Text Handling in BI Publisher Reports

Starting from PeopleTools 8.52, BI Publisher reports were fully capable of displaying formatted HTML data (RTE) via the use of a special XSL transformation style sheet that was applied to the RTE field at runtime. This XSL style sheet was provided via the delivered sub-template HTML\_SUB that needed to be imported into the RTF template in order to successfully transform the HTML formatted data into its XSL-FO equivalent expected by the BI Publisher core engine.

Starting from PeopleTools 8.54, the HTML\_SUB sub-template is deprecated and is now being replaced with the native rich text handling support built into the current version of the Oracle BI Publisher core engine.

### See Also

Product documentation for *PeopleTools 8.54: BI Publisher for PeopleSoft*, “Creating Reports that Include Rich Text Editor Data”

## PeopleSoft Query

PeopleTools 8.54 brings a number of important enhancements to the already mature and feature-rich PS Query foundation.

Enhancements include:

- Record and field dependencies.
- Default values for prompts.
- Image support.
- Image URLs.
- Multiple query security records.
- Find Query/Connected Query definitional references.
- REST service enablement of query.
- Support for Microsoft Excel 2007 and higher versions.
- Composite query.

## Record and Field Dependencies

Use the Dependency page to specify whether a record or field can be pruned during the SQL pruning process in Composite Query. This page also enables you to specify:

- The details of a record or field, depending on other records or fields.
- Field dependencies in order to prevent the pruning of a record or field that is required by another field.

**Note:** The dependency settings in the Dependency page are used only for the SQL pruning process in Composite Query.

### See Also

Product documentation for *PeopleTools 8.54: Query*, "Defining Selection Criteria," Defining Records and Field Dependencies

## Default Values for Prompts

Query prompts can now have default values, which are specified as constants or by the use of system variables such as %Date, %DateTime, %Time. Prompts can be set as optional.

### See Also

Product documentation for *PeopleTools 8.54: Query*, "Defining Selection Criteria," Defining Prompts," Editing Prompt Properties

Product documentation for *PeopleTools 8.54: Query*, "Defining Selection Criteria," Defining Prompts," Using the Default Prompt Values for Query Prompts.

## Image Support

Query supports the use of *image* fields in the query definition. Setting the *Image Fields* property under the Query Properties page determines how these field values are displayed in the Query result set. If the image field property is set to *Image Data*, the image field value (binary image) will be displayed as an embedded image in the result set when you run the query to HTML output format. If you run a query to any other type of format (for example, XML or TXT), a Base64 encoded data string representing the image is displayed instead. When setting the property to *Image Hyperlink*, a URL will be returned in place of the field value. When accessed, this URL will return the image as an image file in a new browser window.

### See Also

Product documentation for *PeopleTools 8.54: Query*, "Creating and Running Simple Queries," Creating New Queries, Viewing and Editing Query Properties

Product documentation for *PeopleTools 8.54: Query*, "Creating and Running Simple Queries," Creating New Queries, Viewing and Editing Query Properties, Query Image Field Handling

## Image URLs

Beginning from PeopleTools 8.54, you are able to use the Image URI link in the Edit Expression Properties page to access the Select a Query page where you can build URLs in the image URL format.

### See Also

Product documentation for *PeopleTools 8.54: Query*, "Defining Selection Criteria," Defining URL in PeopleSoft Query, Defining Image URL Widget

## Multiple Query Security Records

PeopleTools has added an Advanced Query Security option to Application Designer. This feature allows up to five Query Security Records to be associated with a single record, including the ability to associate security with non-key fields. While powerful, this feature should be used sparingly because multiple additional joins will affect query performance.

### See Also

Product documentation for *PeopleTools 8.54: Query*, "PeopleSoft Query Security," Using Row-Level Security and Query Security Record Definitions, Adding Multiple Query Security Records for a Record Definition

## Find Query/Connected Query Definitional References

PeopleTools 8.54 adds a Find References link, allowing a user to determine if a Query or Connected Query is used as a data source by another component, such as another Connected Query, BI Publisher report, Pivot Grid, Search Definition, or RSS Feed.

### See Also

Product documentation for *PeopleTools 8.54: Query*, "Creating and Running Simple Queries," Performing Definitional Reference Lookup in Queries

Product documentation for *PeopleTools 8.54: Query*, "Creating and Running Simple Queries," Using Query Viewer

Product documentation for *PeopleTools 8.54: Query*, "Using Connected Query," Using Connected Query Manager, Performing Definitional Reference Lookup in Connected Queries

Product documentation for *PeopleTools 8.54: Query*, "Using Connected Query," Using Connected Query Viewer,

## REST Service Enablement of Query

All Query Access Service (QAS) services are now also available as REST services.



## Support for Microsoft Excel 2007 and Higher Versions

PeopleSoft Query supports Microsoft Excel 2007 and higher versions. As a result, you can send more than 64 thousand rows of query output to Microsoft Excel.

### See Also

Product documentation for *PeopleTools 8.54: Query*, "Creating and Running Simple Queries,"  
Downloading Queries

## Composite Query

With PeopleTools 8.54, developers will use the new Composite Query feature (essentially a superset of the previously provided Connected Query) to retrieve multiple levels of related information as a single, flattened query result, allowing for the subsequent aggregation and transformation of the data. In addition, PeopleTools supports a new user interface for managing composite queries and support for web services via Query Access Service.

Here is a comparison of key differences between Composite Query and Connected Query:

Composite Query	Connected Query
<inner OR left outer > join two or more queries together based on field <condition type = LT, GT, and so on > field	Inner join two or more queries together based on field = field
User decides which fields from the underlying queries are selected.	All fields from the underlying queries are selected.
Selected fields can be aggregated. (Min, Max, Count, Avg, Sum)	NA

In addition, composite queries can have their own:

- Prompts.
- Expressions.
- Filters (where criteria).
- Having, Order By, and Group By clauses.

### See Also

Product documentation for *PeopleTools 8.54: Query*, "Using Composite Query"

## nVision

PeopleTools 8.54 extends the existing support for Microsoft Excel format reports by adding a Cross Platform Framework (PXF) for Excel report generation. PXF enables users to deliver Excel format reports for nVision and Query output to Excel without having to maintain a Windows server in the data center.

### See Also

Product documentation for *PeopleTools 8.54: PS/nVision*, "Getting Started with PS/nVision," PS/nVision Overview

## Process Scheduler

PeopleTools 8.54 extends the capabilities of Process Scheduler to include a number of important enhancements, including:

- Support the distribution or transfer of report files and deleting or purging directories with FTPS and SFTP servers.
- Support the search for reporting data.
- Support automated scheduling.
- Dynamic Alert Sliding Windows

### Defining Report Nodes

PeopleSoft 8.54 supports the distribution or transfer of report files and deleting or purging directories with FTPS and SFTP servers.

Report Node Definition now has a new simplified user interface that has a single tab with dropdown to select the different transfer modes.

### See Also

Product documentation for *PeopleTools 8.54: Process Scheduler* "Setting Server Definitions," Defining Report Nodes

### Searching for Reports

PeopleTools 8.54 extends the Search Framework for use with the Process Scheduler to search for reports and related data stored in the database, based on a keyword and displays the report containing the specific keyword.

### See Also

Product documentation for *PeopleTools 8.54: Process Scheduler* "Working with Search Reports"

## Automated Scheduling

With PeopleTools 8.54, you can use the Automated Scheduler to:

- Schedule self-service schedules
- Partition schedule

### Self- Service Schedule

Self-service scheduling allows you to execute processes and generate reports using context specific information without breaching the data security. You can execute self-service schedules using API or from any transaction page where the self-service schedule is configured. This schedule then retrieves mapped application data from the transaction page and uses it for the process execution. Additionally, based on the configuration, the user receives alert sliding windows giving the status of the process they execute and a link to the final report.

#### See Also

Product documentation for *PeopleTools 8.54: Process Scheduler*, “Developing and Managing Self-Service Schedules”

### Partition Schedule

Partition scheduling provides capability for performing parallel processing and also for automation of batch execution of multiple processes. It helps in faster performance by breaking down a process that works on a large data set, to multiple parallel processes that work in tandem on smaller datasets. You can also execute multiple processes that process different data.

You can execute a partition process either from the Partition Manager page or by using the Partition Schedule API in PeopleCode.

Partition schedules can be configured to read values either from existing prompt tables of the fields chosen as partition fields or by implementing Application Class in PeopleCode which return the set of partition data values.

#### See Also

Product documentation for *PeopleTools 8.54: Process Scheduler*, “Developing and Managing Partition Schedules”

## Dynamic Alert Sliding Windows

Based on the configuration, users receive alert sliding windows giving the status of the process they execute. This window appears dynamically as a slide-in window at the bottom right in all PeopleSoft pages, which shows the processing status for the configured states. There would also be a final Process Status Window which gives a link using which the generated report for the process can be directly opened from Report Repository.

#### See Also

Product documentation for *PeopleTools 8.54: Process Scheduler*, “Defining PeopleSoft Process Scheduler Support Information,” Defining System Settings

## Reporting Web Services

PeopleTools 8.54 extends the PeopleSoft Reporting Web Services to include:

- RESTful QAS Web Services.
- Composite Query Services.

### RESTful QAS Web Services

The RESTful services use the same service handler classes that are used by the SOAP-based versions. Conditional logic added to the handler classes will determine, based on the incoming Request message name, which service has been invoked and will respond appropriately.

The Response message is identical (XML File) regardless of whether a SOAP or REST request was made, and so the construction of response message remains the same for either Request type. The Response message will even utilize the same response message definition and schema. The differences mainly center on how the request message is parsed for input parameters. In the case of RESTful request, the parameters are part of the RESTful request URL.

#### See Also

Product documentation for *PeopleTools 8.54: Reporting Web Services*

### Composite QAS Web Services

QAS utilizes the PeopleSoft Integration Broker framework to implement two new synchronized composite query operations. Composite query functionality is accessed through SOAP request and response messages. All QAS operations have request and response message schemas defined. Users can acquire message schema by inspecting WSDL.

#### See Also

Product documentation for *PeopleTools 8.54: Reporting Web Services*

## Tree Manager

Starting from release 8.54, using the Tree Manager page, you are able to cut multiple tree nodes or tree leaves using the Cut icon, and then you use the Paste as Sibling or Paste as Child icons to paste all cut tree nodes or tree leaves at once together as children or siblings.

#### See Also

Product documentation for *PeopleTools 8.54: Tree Manager*, "Using PeopleSoft Tree Manager," Working with Tree Nodes, Describing Tree Nodes

## PeopleSoft SQR

Additional capabilities have been added to the already robust and mature SQR platform. These include:

- Support for 64-bit executables on Microsoft Windows.
- Support for XML output type.
- Rich Text support for long edit fields.
- Ability to use administrator's personalization when running an SQR report.

### Generating XML Output

With PeopleTools 8.54, SQR will create XML output files when XML output file format is specified while scheduling the job from "System Process Requests" page.

#### See Also

Product documentation for *PeopleTools 8.54: SQR for PeopleSoft Developers*, "Generating XML Output from SQR Program"

### Rich Text Support

SQR allows you to print PDF reports that have rich text content stored in tables from "long edit" boxes in PIA pages. Customers can print rich text formatted content without fear of losing the format with qualifier "CODE-PRINTER=HT" with print command.

#### See Also

Product documentation for *PeopleTools 8.54: SQR Language Reference for PeopleSoft*, "SQR Command," CODE-PRINTER

### Personalizing Default Locale

Starting with PeopleTools 8.54, users in different geographical region can generate personalized SQR reports specific to the region.

#### See Also

Product documentation for *PeopleTools 8.54: SQR for PeopleSoft Developers*, "Using National Language Support," Defining a Default Locale, Personalizing a Default Locale

Product documentation for *PeopleTools 8.54: SQR Language Reference for PeopleSoft*, "Using the PSSQR.INI File and the PSSQR Command Line," Locale Section

# Integration Tools Enhancements

This section discusses the enhancements in PeopleSoft's integration tools and describes enhancements to

- PeopleSoft Integration Broker.
- PeopleSoft Component Interfaces.
- MultiChannel Framework.
- Workflow Technology.

## PeopleSoft Integration Broker

This section describes enhancements to PeopleSoft Integration Broker, including:

- Integration Broker configuration requirements.
- REST services.
- Remote Intradoc Client (RIDC) target connector.

### Integration Broker Configuration Requirements

The Mobile Application Platform delivered in PeopleTools 8.54 uses PeopleSoft Integration Broker and REST services as part of its framework. As a result defining the target location for REST services is mandatory as part of the Integration Broker configuration. And, when defining the REST target location, the default local node must be part of the REST URL.

#### See Also

Documentation for *PeopleTools 8.54: Integration Broker Administration*, "Configuring PeopleSoft Integration Broker for Handling Services," Setting Target Locations for REST Services

### REST Services

This section describes enhancements to the PeopleSoft REST services framework in PeopleTools 8.54.

#### Additional Inbound Security Options for REST Provider Services

Two new options will be available for setting the security requirements for inbound consumer REST services.

Currently, when developing provider REST services, you can require that inbound consumer services are sent using SSL, basic HTTP authentication, and basic HTTP authentication and SSL, or none of these.

Beginning in PeopleTools 8.54, PeopleSoft Token and PeopleSoft Token and SSL are added inbound security options.

### See Also

Documentation for *PeopleTools 8.54: Integration Broker Administration*, "Setting Up Secure Integration Environments," Validating Security on Inbound Integrations

## Optional Content Types and Status Codes

To add more flexibility in the REST framework, you can assign optional content types and status codes to message instances on REST service operations.

Generated WADL documents will reflect the optional selected values, allowing consumers to request the content type they prefer.

You can define optional content types on request, response, and fault message instances. You can define optional status codes on response message instances.

### See Also

Documentation for *PeopleTools 8.54: Integration Broker*, "Managing REST Service Operations," Understanding REST Service Operations, REST Messages, Optional MIME Content-Types and HTTP Status Codes

## Remote Intradoc Client (RIDC) Target Connector

PeopleTools is delivering a Remote Intradoc Client (RIDC) target connector to allow users to interact with the Oracle WebCenter Content product.

Oracle WebCenter Content provides leading edge solutions for all types of content management needs. It has been chosen as the repository for large data sets for Fusion document discovery and transfer.

The new connector will:

- Allow files to be uploaded to or downloaded from the Oracle WebCenter Content server.
- Support text and binary file types such as .xls, .pdf, .doc, and .zip.

### See Also

Product Documentation for *PeopleTools 8.54: Integration Broker Administration*, "Using Listening Connectors and Target Connectors," Working with the RIDC Target Connector

## PeopleSoft Component Interfaces

This section describes enhancements to PeopleSoft Component Interfaces, including:

- Errors and warnings worksheet.
- Validating multiple component interfaces.

### Errors and Warnings Worksheet

In the previous release of PeopleTools, the Excel to Component Interface utility did not consolidate all errors for data submission on a single worksheet. PeopleTools 8.54 is adding an Errors worksheet to display all of the errors. These errors were previously displayed using mouse over move on the error status in the Status column of the Staging and Submission worksheet. You can also review the errors from an HTML page in tabular format. This will help you to review errors and warnings, now that they will be on a single worksheet.

#### See Also

Product documentation for *PeopleTools 8.54: Component Interfaces*, "Using the Excel-to-Component Interface Utility," Viewing the Staged Data

### Validating Multiple Component Interfaces

From this release of PeopleTools you can also validate multiple component interfaces in PeopleSoft Application Designer. This dismisses the cumbersome process of validating bulk component interfaces one by one in Application Designer.

#### See Also

Product documentation for *PeopleTools 8.54: Component Interfaces*, "Developing Component Interfaces," Validating Component Interfaces

## MultiChannel Framework

This section describes the enhancement made to Multichannel Framework:

Microsoft has retired Messenger and no longer supports any presence detection features. Therefore, MCF no longer supports presence detection on MSN client messaging. Also, Skype no longer supports presence detection feature in a contact list, so MCF no longer supports presence detection on Skype client messaging.

#### See Also

Product documentation for *PeopleTools 8.54: MultiChannel Framework*, "Configuring Instant Messaging in PeopleSoft MultiChannel Framework," Configuring Instant Messaging Server Details



## Workflow Technology

Enhancements to Workflow Technology include advanced Worklist Search and rich text support for Trigger Business Event emails.

### Advanced Worklist Search

This enhancement utilizes the PeopleTools Search Framework and simplifies the query generation and configuration of other SES related objects for workflow. This enables users to search for worklist entries based on application-specific fields.

#### See Also

Product documentation for *PeopleTools 8.54: Workflow Technology*, “Configuring Worklist Search”

### Rich Text Support

This enhancement provides a new option in the activity mappings to support rich text in Trigger Business Event emails.

#### See Also

Product documentation for *PeopleTools 8.54: Workflow Technology*, “Adding Events and Routings,” Adding and Defining Email Routings

# Lifecycle Management Tools Enhancements

This section discusses the changes to PeopleSoft lifecycle management technology, including:

- PeopleSoft Update Manager.
- Change Assistant.
- Data Migration Workbench.
- PeopleSoft Test Framework.

## PeopleSoft Update Manager

The PeopleSoft Update Manager (PUM) tool, introduced with the PeopleSoft 9.2 application releases, streamlined the process of applying updates using the PeopleSoft Update Image. PeopleTools 8.54 provides new features that provide the ability for the source and target PeopleSoft systems to be on different PeopleTools versions.

The new features include:

- The current PeopleSoft Update Image for each application will be on PeopleTools 8.54.  
The image supports patching PeopleTools 8.53 and PeopleTools 8.54 databases, and as a result customers can continue to patch their PeopleTools 8.53 databases without upgrading.
- The PeopleSoft Update Image shared folder will include the supported 8.53 Oracle (32-bit) and PeopleTools clients, as well as the supported 8.54 Oracle (64-bit) and PeopleTools clients.
- Data Migration projects have been integrated with PUM to create a composite project of customer-selected units of work containing DMW projects and their dependents for ADS in a manner similar to what has been done for IDE objects in 8.53.

### See Also

Product documentation for *PeopleTools 8.54: Change Assistant and PeopleSoft Update Manager*

## Change Assistant

This section describes the new features for Change Assistant, including:

- Updated user interface.
- Environment Management Hub is only used for file deploy.
- Upload target database information to PUM source.
- Support for applying database changes delivered with PeopleTools patches.
- Extended command-line functionality.

### Updated User Interface and Wizards

The Change Assistant user interface has been redesigned to simplify the setup process and avoid duplicate effort in defining databases. The new user interface uses the PeopleTools tangerine color scheme. In addition to the new look and feel, the user interface features the following enhancements:

- Each action has an associated Wizard to guide the user through the process.
- Decoupled Applies.

In PeopleTools 8.53 all processes/actions required a source and target database to be defined. In PeopleTools 8.54, we provide source-only and target-only options where possible.

- The create package process has been split into independent actions.
- Enhanced package compatibility checking and validation.
- The Job view features these updates:
  - An option has been added to display filtered template steps.
  - Additional step statuses have been added.

### Environment Management Hub is used for File Deploy

After a database has been defined to Change Assistant, Change Assistant will retrieve the database information without relying on EMF. You need only configure EMF if using File Deploy.

#### See Also

Product documentation for *PeopleTools 8.54: Change Assistant and PeopleSoft Update Manager*, "Using Update Manager Action," Configuring Change Assistant for Update Manager

## Upload Target Database Information to PUM Source

The Upload Database Information to PUM Sources is a stand-alone task in PeopleTools 8.54.

You can use this action to upload the target database information, including products and maintenance logs. Once the database information is uploaded, the database will be available in PeopleSoft Update Manager as a target database.

In previous releases this action occurred during internal processing, but was not a selectable task.

### See Also

Product documentation for *PeopleTools 8.54: Change Assistant and PeopleSoft Update Manager*, "Using Update Manager Action," Uploading Target Database Information

## Support for Applying Database Changes delivered with PeopleTools Patches

When you install a PeopleTools patch, a change package containing all the database changes will be included in the PTP directory. A new task has been added to the Update Manager action "Apply a Patch to Your Current PeopleTools Release". The wizard will guide you through the setup process, check the compatibility and apply the patch.

### See Also

Product documentation for *PeopleTools 8.54: Change Assistant and PeopleSoft Update Manager*, "Applying PeopleTools Patch"

## Extended Command-Line Functionality

In PeopleTools 8.53 applying packages using the command-line interface was supported. This release you can perform most PeopleSoft Update Manager configuration and set up using the command-line interface.

### See Also

Product documentation for *PeopleTools 8.54: Change Assistant and PeopleSoft Update Manager*, "Working with Change Assistant," Running Change Assistant Job from the Command Line

## Data Migration Workbench

Data Migration Workbench is a lifecycle management tool first delivered with PeopleTools 8.53 that enabled customers to move and compare configuration data easily and securely between PeopleSoft application instances such as DEV, TEST, and PROD. In PeopleTools 8.53, this tool was used primarily for application configuration/setup data. PeopleTools 8.54 introduces enhancements to improve data integrity, support PeopleTools ADS managed objects, allow for conditional merging of data, and add to the overall robustness of the utility. This section describes the new features for Data Migration Workbench, including:

- Enhancements to Application Data Sets.
- Merge capabilities.
- Support for ADS managed objects.
- Updated user interface.
- Updated user interface.

### Enhancements to Application Data Sets

Application Data Sets are the primary data structures used in Data Migration Workbench. The new features in 8.54 provide the ability to:

- Define relationships within and between Application Data Sets to better define structure. These references have properties that determine how and when certain processing will be done to better edit the data and when to include related objects into a project. They will also ensure that referential integrity rules are applied.
- Define groups of records and fields within an Application Data Set that, together with group properties, can be used to define records and fields that can be safely merged or that should be hidden from compare.
- Associate application classes that automatically perform specialized shape and value transforms that occur between Tools releases when needed.

#### See Also

Product documentation for *PeopleTools 8.54 Data Migration Workbench*, "Using Data Set Designer," Defining Relations, Defining Groups, Defining Validation

## Merge Capabilities

Data Migration Workbench is used to migrate PeopleTools features, such as Pivot Grids and Activity Guides, from one PeopleSoft instance to another. In some cases, code may be required to apply PeopleSoft-delivered changes on top of a customer's customizations. A new feature within Data Migration Workbench allows specific rules to be applied when migrating data to enable changes to be applied while preserving customizations.

### See Also

Product documentation for *PeopleTools 8.54 Data Migration Workbench*, "Using Data Set Designer," Defining Validation

## Support for ADS Managed Objects

ADS definitions are delivered for the next generation PeopleTools managed objects like Pivot Grids Activity Guides, WorkCenters, Related Content and so on. These ADSs are used for upgrade, compare, merge, and validation in LCM activities. These delivered ADS definitions support shape and value transforms which make it possible to apply updates from the 8.54 PUM Source to either an 8.53 or 8.54 target database.

ADS are fully integrated into PUM/Change Assistant.

## Updated User Interface

The user interface for reviewing compare reports has been redesigned to provide summary information regarding additions, deletions, differences, same and messages. Users can drill down to view the details for each line displayed and decide whether or not to accept the action.

This is an example of the summary for project content:

Project Content ?		View All		First	1-2 of 2	Last
Data Set Name	Description	Additions	Deletions	Differences	Same	Messages
<a href="#">PIVOTGRID_DEFINITION</a>	Pivot Grid Definition	0	0	1	2	3
<a href="#">RCF_SERVICES</a>	RC Services	2	0	0	0	2

Drill down on the differences to view the compare details. For data sets with merge attributes, you will be able to keep your customizations. This is an example of the compare details:

Project Name ADS22222      TEST      State Compare from file succeeded

Data Set Name PIVOTGRID\_DEFINITION      Pivot Grid Definition      Compared 06/22/2014 8:41AM

---

**Data Set Instance** ?

Instance Keys PTPG\_PGRIDNAME=ENROLLMENTS

\*Copy Action Merge      Copy and Keep Configurations       Copy Done

---

**Display Order** ?

Record/Field       Record/Group/Field       Group/Record/Field

---

**Filters** ?

---

**Compare Report** ?      Personalize | Find | View All |      First 1-9 of 9 Last

General    Additional

Context	Keep Configurations	Item Action	Source Value	Current Target Value	Proposed Target Value
[-] Group: No Group		Add			
[-] Group: PVG_AXISOPT_GROUP		Keep			
[-] Group: PVG_CHART_GROUP		Keep			
[-] Core Pivot Grid Record: ENROLLMENTS		Keep			
[-] Pivot Grid Chart Options: ENROLLMENTS.View, -	<input checked="" type="checkbox"/>	Keep			
Type		Keep	2D Bar Chart	3D Pie Chart	3D Pie Chart
[-] Group: PVG_CORE_GROUP		Keep			
[-] Group: Pivot Grid NUI Options Group		Add			
[-] Group: PVG_QRYPRMPT_GROUP		Keep			

**See Also**

Product documentation for *PeopleTools 8.54 Data Migration Workbench*, "Copying and Comparing Projects," Viewing Compare Reports

## PeopleSoft Test Framework

PeopleSoft Test Framework (PTF) enables customers to automate testing with a tool that integrates with and has firsthand knowledge of PeopleSoft metadata. Enhancements for PeopleTools 8.54 focus primarily on providing smart automation, which is all about running the tests that need to run in the way that they should be run based on what has happened in your application.

By improving integration among PeopleSoft Test Framework, PeopleSoft metadata, and lifecycle management reports, in release 8.54, you will now be able to easily determine which tests require modification and which tests need to be run.

Changes to PeopleSoft Test Framework also include many usability enhancements for creating, administering, recording, and executing tests.

This section describes the new features for PTF, including:

- Mass update.
- Interact with Application Designer projects.
- Filtered views.
- Reporting enhancements.
- Usability enhancements.

### Mass Update

In the PTF Client Tools menu, a new Mass Update option is available. This feature enables bulk updates of specific tests attributes, across multiple tests. For example, suppose in a new release, a component name has changed, and every test you have that references that component must now be modified in order to execute successfully. Using the Mass Update tool, you retrieve the impacted tests, search for steps that include that component and replace the previous component name with the new name.

When you use the mass update tool, you define and apply a filter to retrieve tests that match specific criteria, returning the results in a grid format similar to the Test editor, but including steps for multiple tests. The grid includes two additional columns: Folder, and Test, so you can identify which test the steps are from. Once the grid is populated, you can use a find/replace dialog box to search for specific test step field values, modify the steps, and save your changes.

### See Also

Product documentation for *PeopleTools 8.54 Test Framework*, “Administering PTF,” Performing Mass Updates

### Interact with Application Designer Projects

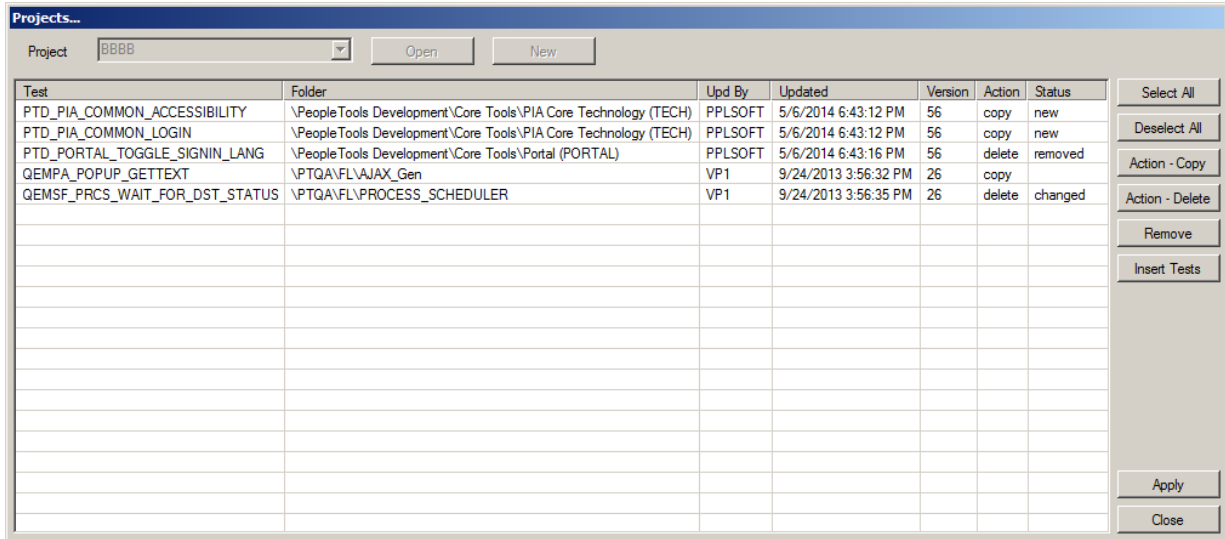
A new Project menu is available in the PTF Client, which enables you to inspect and maintain the test contents of an Application Designer project, and complete the following tasks:

- Insert tests into Application Designer projects.
- Remove tests from Application Designer projects.



- Create new Application Designer projects.
- Set the upgrade action type for the tests within Application Designer projects.

These tasks are accomplished using the new Projects dialog box.



### Projects Dialog Box

#### See Also

Product documentation for *PeopleTools 8.54 Test Framework*, “Administering PTF,” Working with Application Designer Projects in PTF Client

### Filtered Views

You can create and apply filters to the PTF Explorer tree, to view subsets of test assets based on specific criteria. This enables you to view only tests with certain characteristics, or that belong to certain categories, such as: tests with similar names; tests belonging to the same parent folder; tests last updated by the same user; tests resulting from the same Test Maintenance Report run, and so on. When the filter is applied, if a folder does not contain any tests that meet the filter criteria, then that folder is hidden.

The filter categories include:

- Test properties: Test Name, Test Description, Updated By, Update Date/Time, Version.
- Step properties: Recognition, Component, Page, Record, Field.
- Tests flagged by the test maintenance report: UserID, Project Name, Seq.

- Tests flagged by the test coverage report: UserID, Project Name.
- Application Designer project.

### See Also

Product documentation for *PeopleTools 8.54 Test Framework*, "Using PTF Explorer," Defining and Applying Filters

## Reporting Enhancements

Reporting enhancements include the following items:

- When generating PTF PIA reports, you can specify a PTF parent folder as part of the report criteria, which enables you to produce reports by folder for most reports.
- A new Test Matrix report, which provides information about the hierarchical relationships for a given test, listing its top level parent test, and all child tests.

### See Also

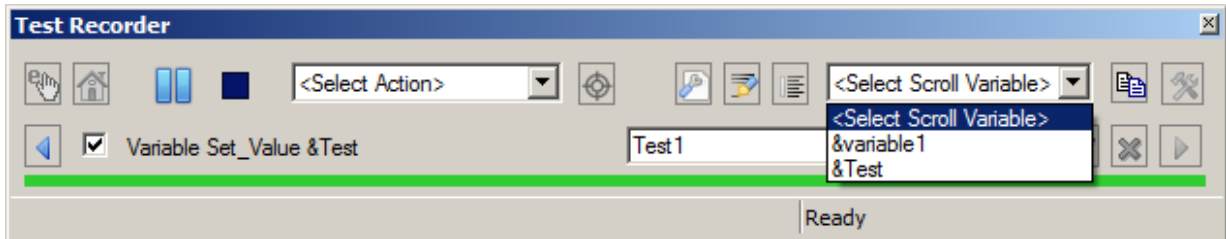
Product documentation for *PeopleTools 8.54 Test Framework*, "Identifying Change Impacts," Creating Test Matrix Reports

## Usability Enhancements

Usability enhancements include:

- A search option in the Quick Open window that enables you to search for and open multiple items at one time.
- A rename option that enables you to rename folders or tests in the PTF tree view.
- The ability to activate/inactivate multiple test steps at one time.
- A Run from Step option that enables you to restart a shell test from a specific step. This option is available through the Test menu as well as from the command line.
- Recognition field enhancements:
  - Splitting the Recognition field into two separate fields: Recognition and Parameters.
  - Adding support for specific wildcard characters, to provide flexibility for changing recognition strings, especially abstract/non-descriptive page indexes. These include ~ (like), # (single numeric digit), ? (single alpha digit), and \* (any character string).

- Enhancements that make recording tests and finding previously recorded tests even easier:
  - In the Recorder toolbar, step icons have been replaced with a single drop-down list box.
  - You can append scroll variables at record time.



Test Recorder Toolbar

### See Also

Product documentation for *PeopleTools 8.54 Test Framework*, "Using PeopleSoft Test Framework"

## Accessibility

This section describes accessibility improvements, including:

Web Content Accessibility Guidelines (WCAG) 2.0 Support.

Voluntary Product Accessibility Templates (VPATs)

### Web Content Accessibility Guidelines (WCAG) 2.0 Support

PeopleTools 8.54 makes it possible for PeopleSoft applications to conform to WCAG 2.0 AA regulatory guidelines. Support for WCAG 2.0 means PeopleSoft applications built on PeopleTools 8.54 will conform to the latest accessibility regulations. PeopleTools 8.54 also makes it possible for customers to maintain this level of conformance when they create or modify pages.

Web Content Accessibility Guidelines (WCAG) are part of a series of guidelines published by the W3C's Web Accessibility Initiative. Their goal is to make content accessible, primarily for disabled users but also for all user agents, including highly limited devices, such as mobile phones. The current version (2.0) of the guidelines is also an ISO standard: ISO/IEC 40500:2012.

WCAG 2.0 is an international standard used in most countries that enforce accessibility regulations. The new standard provides additional requirements to address new web technologies and has become the standard by which many organizations monitor software compliance. WCAG 2.0 extends standards described in WCAG 1.0 as well as the U.S.-specific regulations described in section 508 of Federal access standards.

**Note:** Previous versions of applications running on PeopleTools 8.54 will not automatically conform to all aspects of WCAG 2.0. Modifications to earlier applications may be necessary to conform to specific WCAG 2.0 guidelines.

To start PeopleSoft applications in accessibility mode, a new **Enable Accessibility Mode** check box is now available directly on the sign in page, which enables you to start that session in accessibility mode.

#### See Also

Product documentation for *PeopleTools 8.54*, "Accessibility Guide"

## Voluntary Product Accessibility Templates (VPATs)

Oracle documents the accessibility status of each product or product family using the Voluntary Product Accessibility Template (VPAT). The VPAT was created by a partnership of the Information Technology Industry Council (ITI) and the U.S. General Services Administration (GSA) to create a simple document that could be used by Federal contracting and procurement officials to evaluate a product with respect to the provisions contained in Section 508.

For information about Oracle's commitment to accessibility, visit the Oracle Accessibility Program website at <http://www.oracle.com/pls/topic/lookup?ctx=acc&id=docacc>

To access PeopleSoft VPATs, see <http://www.oracle.com/us/corporate/accessibility/vpats/vpats-peoplesoft-162942.html>

## PeopleSoft Interaction Hub

Unified navigation breaks down many of the navigation barriers between PeopleSoft applications and enables users to access pages and content as needed. It provides PeopleSoft customers with a user experience that is aligned with their business processes, free of product partitions.

This section describes enhancements to unified navigation, including:

- Unified navigation for the PeopleSoft Fluid User Interface.
- Support for multiple PeopleSoft application instances.
- Notification window.

### See Also

Product documentation for *PeopleSoft Interaction Hub 9.1: Portal and Site Administration*, "Administering Unified Navigation in PeopleSoft Interaction Hub"

## Unified Navigation for the PeopleSoft Fluid User Interface

Unified navigation now federates PeopleSoft application nodes for the fluid user experience as well as classic components, eliminating both the need to set up remote content references manually and the need to synchronize security between applications in fluid pages. With unified navigation, fluid features such as the Navigation Bar (Navbar) can expose the remote portal registry (both fluid and classic targets).

Unified navigation supports the following fluid features:

- Navigation Bar (NavBar) unifies the menu, which will be able to show unified local and remote folders and content references of both fluid and classic components. The Navbar merges multiple remote folders and content references, displaying widgets from across federated PeopleSoft applications. For example, a user could view NavBar menu items from PeopleSoft FSCM or PeopleSoft ELM while working on a page from PeopleSoft HCM. The NavBar can also display favorites and recently visited pages from across federated application sources.
- When a user launches a remote page, the header and other links will be based on the PeopleSoft Interaction Hub system context, which ensures that common header styles are maintained across all federated PeopleSoft applications.
- Users can personalize remote content homepages.
- Users can search across federated PeopleSoft content and bring in remote tiles to a home page.
- Runtime security will be in effect for remote tiles, eliminating the need for manual security synchronization.

- Remote related actions and related content across different PeopleSoft applications are in effect. If a user opens a page from a remote content provider, the related actions will remain in effect, providing consistent navigation behavior.
- The following landing page capabilities are present:
  - Users can view fluid homepage tabs from all applications in the cluster through the PeopleSoft Interaction Hub landing page component. They can also personalize the tabs from the landing page component.
  - When two or more fluid homepage tabs from different application have the same content reference label, the system merges them so that end-users see one unified page.
  - Users can pin any classic or fluid page onto the fluid homepage tab defined in any application of the whole cluster.
  - Administrators can specify a fluid homepage tab from any application in the cluster as the default fluid homepage tab for all users.

## Support for Multiple PeopleSoft Application Instances

Unified navigation has also been enhanced to support configuration of multiple instances of the same PeopleSoft application (for example, multiple instances of PeopleSoft HCM). This addresses the need of some customers who deploy application modules or products in separate physical environments. For example, a customer might have different environments based on product areas or geographical regions.

## Notification Window

The Notification Window in interaction hub collates the notifications coming from various content systems. It gives a view of all the notifications that are pending for a user action or an informational message to the user.

The new notifications received from the content system are denoted by a badge in the portal header. The notifications are categorized into actions and alerts, and links are provided to the user to navigate to the content system to perform any actions.

## Document Change History

This section describes the changes made to this document after the initial posting. Please make a note of these changes if you have downloaded previous versions.

Date	Change to Document
July 11, 2014	Version 1 posted.
December 21, 2014	Version 2 posted.
January 23, 2015	Version 3 posted.
March 20, 2015	Version 4 posted. Added information regarding the support for Oracle Mobile Application Framework with PeopleTools 8.54.09.
February 3, 2016	Version 5 posted. In the Platform Support Enhancements, Summary of Added and Changed Product Support section, the previous version of this document listed the Crystal/BOE component and added support for Crystal 2013 and BOE 4. However these products have not been certified. As a result, the information has been removed from the document.